

Model IX – Special Products

EDI can customize any of its immersion products or design special products to meet the unique requirements of a particular application. These products are designated as Model IX followed by a sequence number. Contact us for additional information on any of these products.

Special and Custom Immersion Products:

<u>Model</u>	<u>Description</u>
IX01	Model IX01 is a variant of Model IR. It has a 1 inch IPS socket fitting on the wire end and a 3/4 inch IPS socket fitting on the membrane end.
IX02	Model IX02 is a weighted immersion reference with separable underwater connector on wire end. This allows it to be easily removed from the drop wire for storage.
IX03	Model IX03 is a zinc immersion reference for seawater use.
IX04	Model IX04 is a variant of Model IT. The length has been extended to 8 1/4 inches (21 cm).
IX05	Model IX05 is a Model IR with a 1 inch IPS socket fitting on wire end only.
IX06	Model IX06 is Model IR with a detachable weight.
IX07	Model IX07 is a reduced diameter version of Model IT: 1 1/8 inch (3 cm) dia x 10 inches (25 cm) long.
IX08	Model IX08 is a Model IR with a 30 year design life. Its length has been extended to 12 inches (30 cm).
IX09	Model IX09 is a dual element (Ag/AgCl/SW & Zn) seawater reference electrode mounted on steel bracket. It can be installed by directly welding the bracket to the structure.
IX10	Model IX10 is a Model IR with an extended 1/2 inch (1.2 cm) dia. salt bridge attached. The bridge length can be up to 42 inches (106 cm)

www.edi-cp.com



electrochemical devices, inc.

Sales office: P.O. Box 355; Belmont, MA 02478-0003
Tel: 617-484-9085 **Fax:** 617-484-3923
Main office: P.O. Box 31; Albion, RI 02802-0031
Tel: 401-333-6112 **Fax:** 401-333-9724

I Series
Immersion
Reference
Electrodes

Specify as EDI Model IX01Z-xxx-LWnnn where

z = option codes, A

xxx = element type, AGG or CUG

nnn = wire length in feet

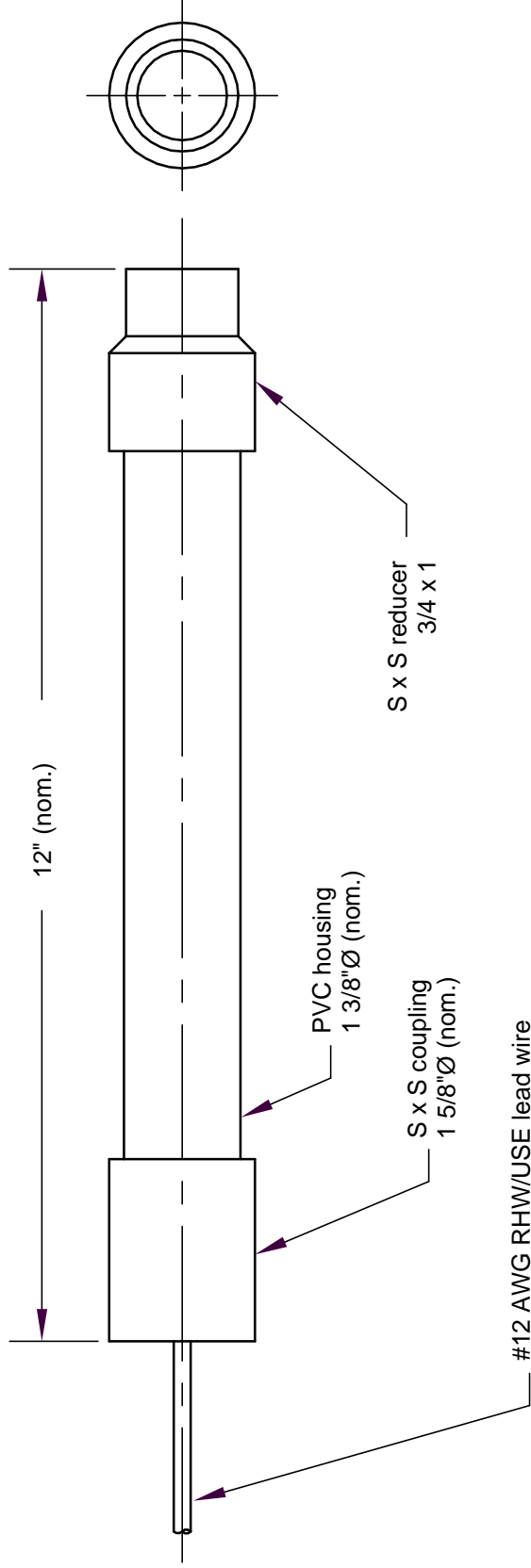
Option Codes

A = Antifreeze protection to -70F

Element Types

AGG = Saturated gelled Ag/AgCl

CUG = Saturated gelled Cu/CuSO4



Model IR with socket fittings on both ends. ©EDI, 1999



electrochemical devices, inc.
PO Box 31, Albion, RI 02802 401-333-6112

Modified Immersion Reference

SCALE HALF

DATE 12/27/99

DRAWN BY FJA

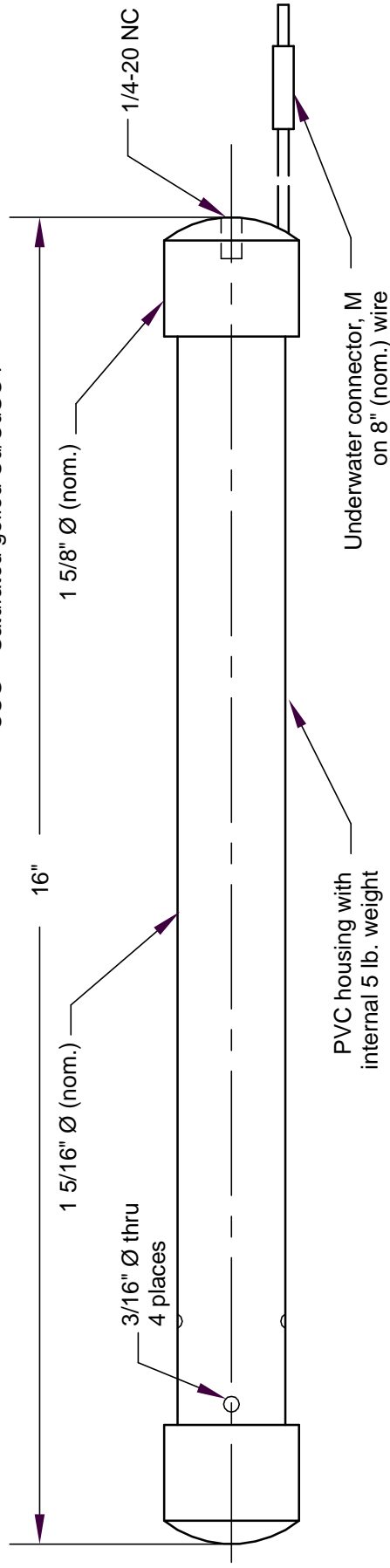
DRAWING NUMBER IX01ASY

Electrode

Specify as EDI Model IX02-xxx-SW
where xxx = element type

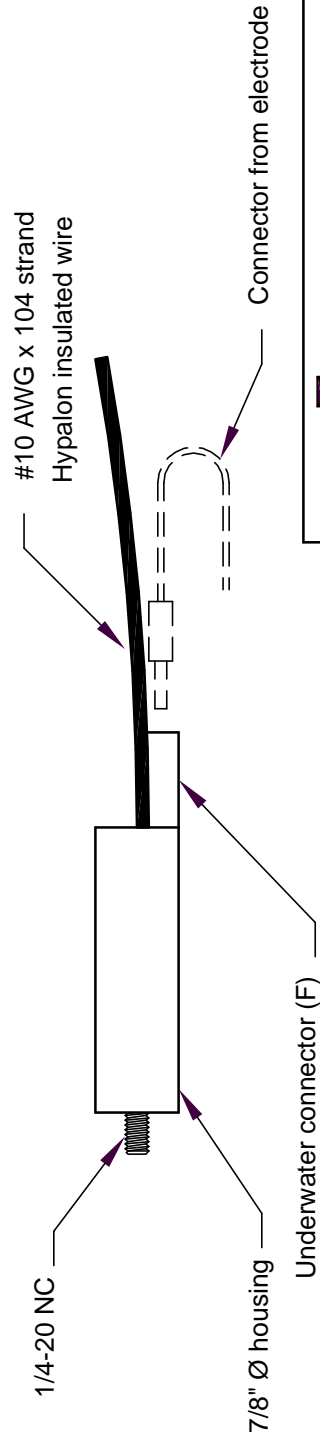
Element Types

AGG = Saturated gelled Ag/AgCl
AGD = Dry-type Ag/AgCl
CUG = Saturated gelled Cu/CuSO4



Wire Assembly

Specify as EDI Model IX02-WIR-LWnnn
where nnn = wire length in feet.



©EDI, 1999



electrochemical devices, inc.
PO Box 31, Albion, RI 02802 401-333-6112

Weighted Separable Immersion Ref.

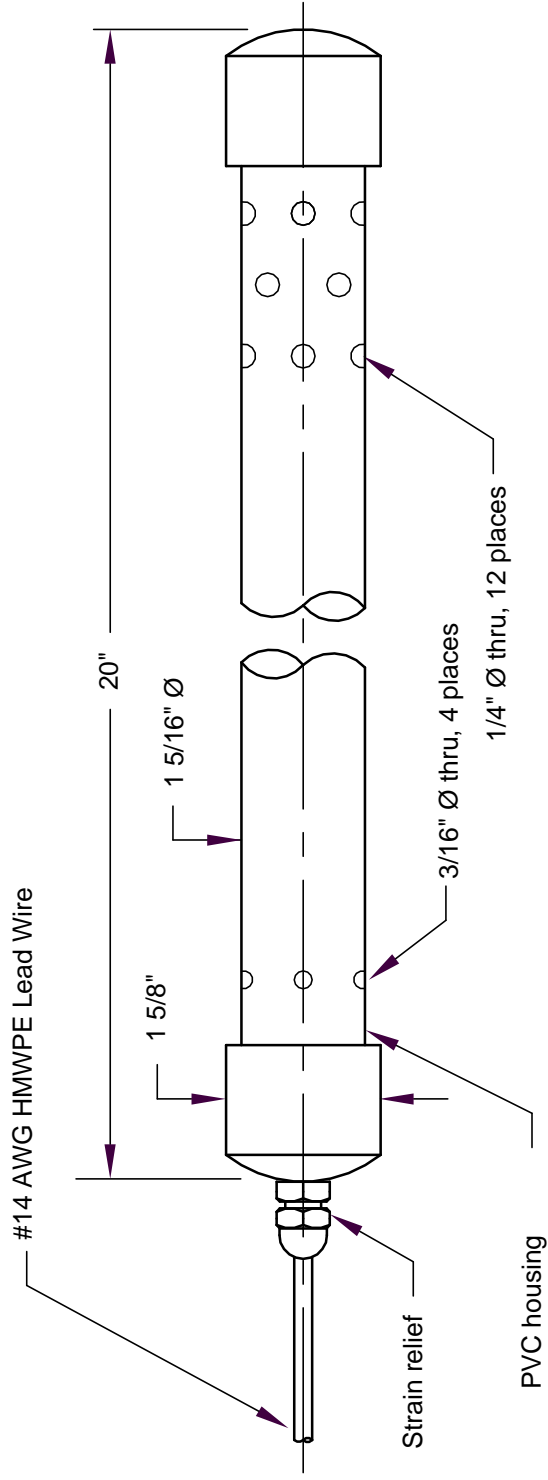
SCALE HALF

DATE 08/01/99

DRAWN BY FJA

DRAWING NUMBER IX02ASY

Specify as EDI Model IX03-ZIN-LWnnn
 where nnn is length of lead wire in feet



©EDI, 1999

edi electrochemical devices, inc.
 PO Box 31, Albion, RI 02802 401-333-6112

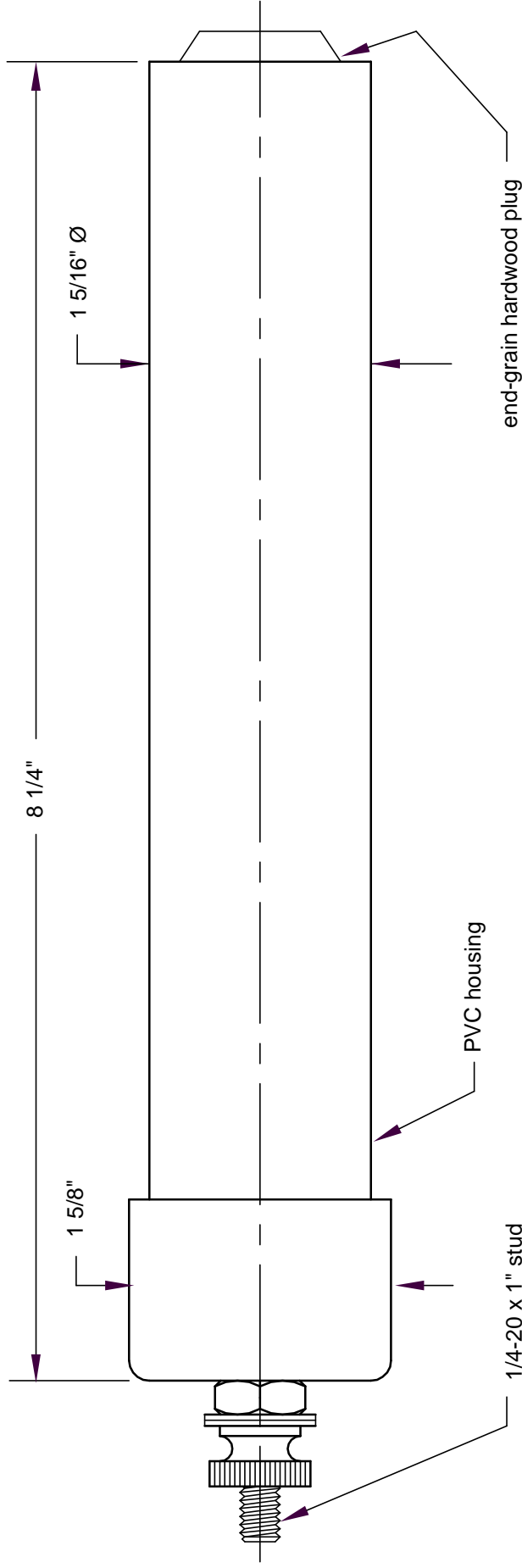
Zinc Immersion Reference

SCALE	HALF	DATE	11/24/99	DRAWN BY	FJA	DRAWING NUMBER	IX03ASY
-------	------	------	----------	----------	-----	----------------	---------

Specify as EDI Model IX04-xxx-ST
xxx = element type

Element Types

AGG = Saturated gelled Ag/AgCl
CUG = Saturated gelled Cu/CuSO4



Elongated version of Model IT

©EDI, 1999



electrochemical devices, inc.
PO Box 31, Albion, RI 02802 401-333-6112

Portable Gelled Reference

SCALE HALF

DATE 12/27/99

DRAWN BY FJA

DRAWING NUMBER IX04ASY

Specify as EDI Model IX05zz-xxx-yy where

zz = option codes, M or A

xxx = element type, AGG or CUG

yy = termination, LWnnn or CWnnn

Element Types

AGG = Saturated gelled Ag/AgCl

CUG = Saturated gelled Cu/CuSO4

Termination Types

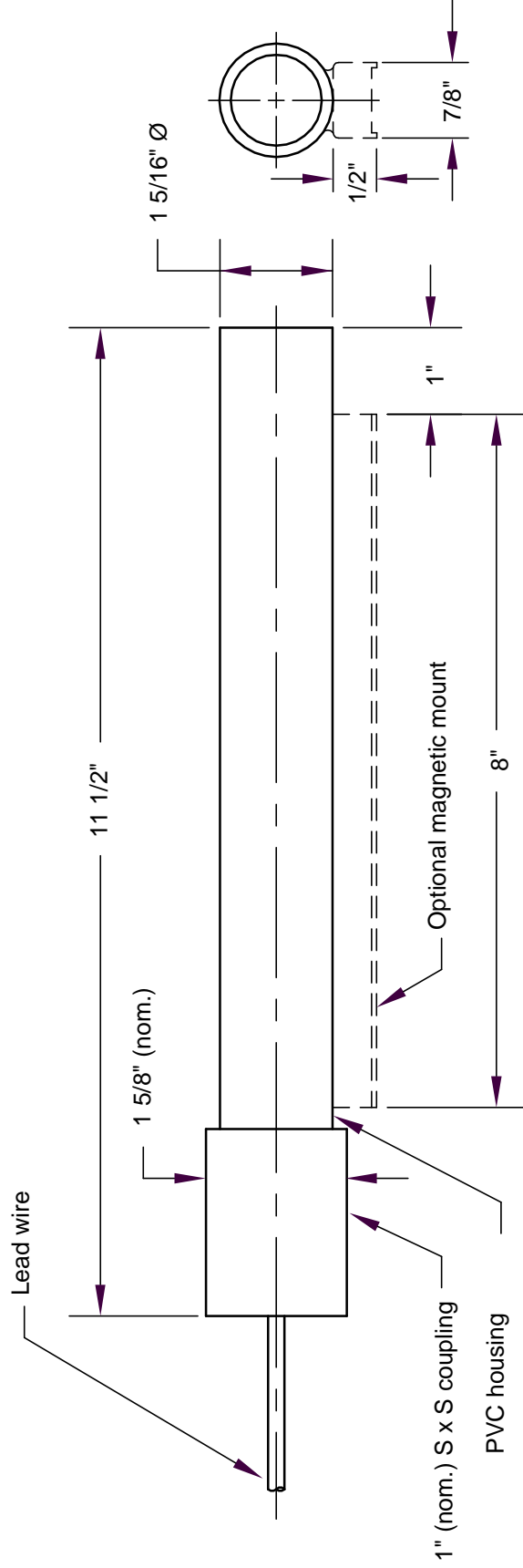
LWnnn - nnn ft. #12 AWG THHN lead wire

CW - custom wire, as specified by customer

Option Codes

M = Magnetic mount

A = Antifreeze protection to -70F



Model IRS with a 1 x 1 coupling

©EDI, 1999



electrochemical devices, inc.
PO Box 31, Albion, RI 02802 401-333-6112

Permanent Immersion Reference

SCALE HALF

DATE 12/27/99

DRAWN BY FJA

DRAWING NUMBER IX05ASY

Specify as EDI Model IX06z-xxx-yy where

z = option codes, A

xxx = element type, AGG or CUG

yy = termination, LWnnn or CWnnn

Option Codes

A = Antifreeze protection to -70F

Element Types

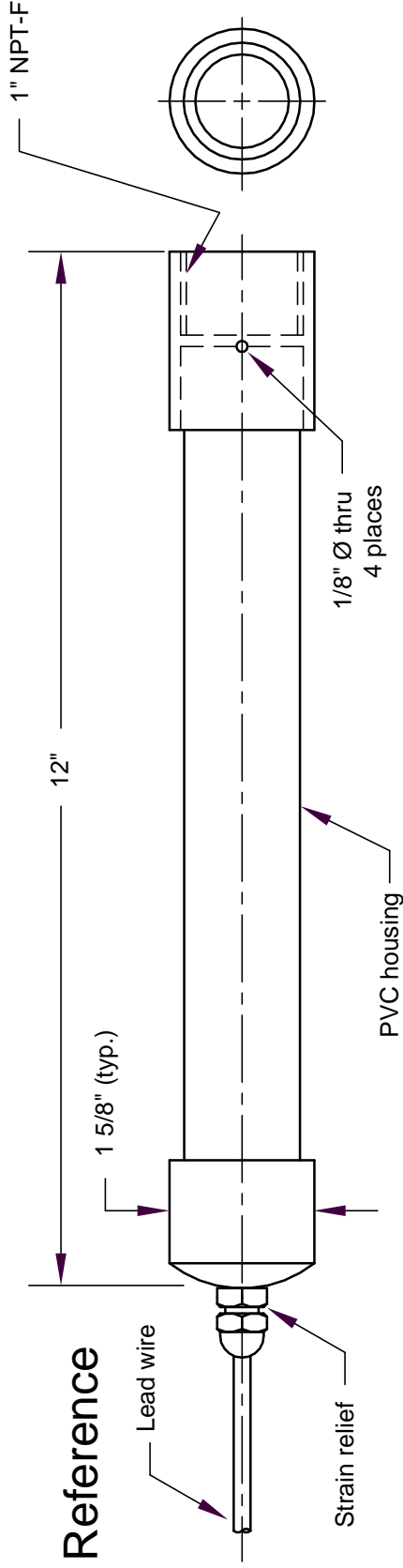
AGG = Saturated gelled Ag/AgCl

CUG = Saturated gelled Cu/CuSO4

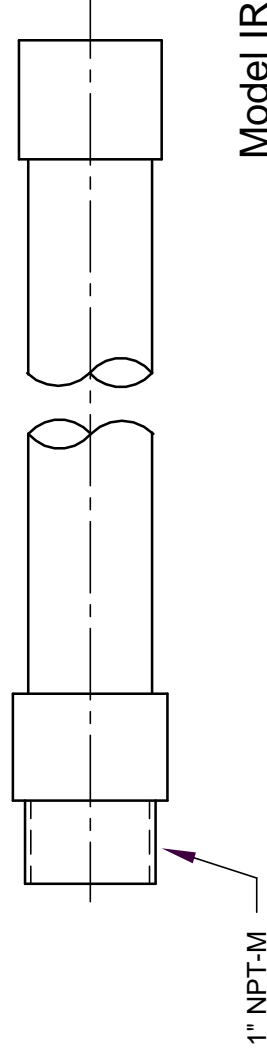
Termination Types

LWnnn - nnn ft. #12 AWG THHN lead wire

CW - custom wire, as specified by customer



Detachable weight



Model IR with a detachable weight

©EDI, 1999



electrochemical devices, inc.
PO Box 31, Albion, RI 02802 401-333-6112

Weighted Immersion Reference

SCALE HALF

DATE 12/27/99

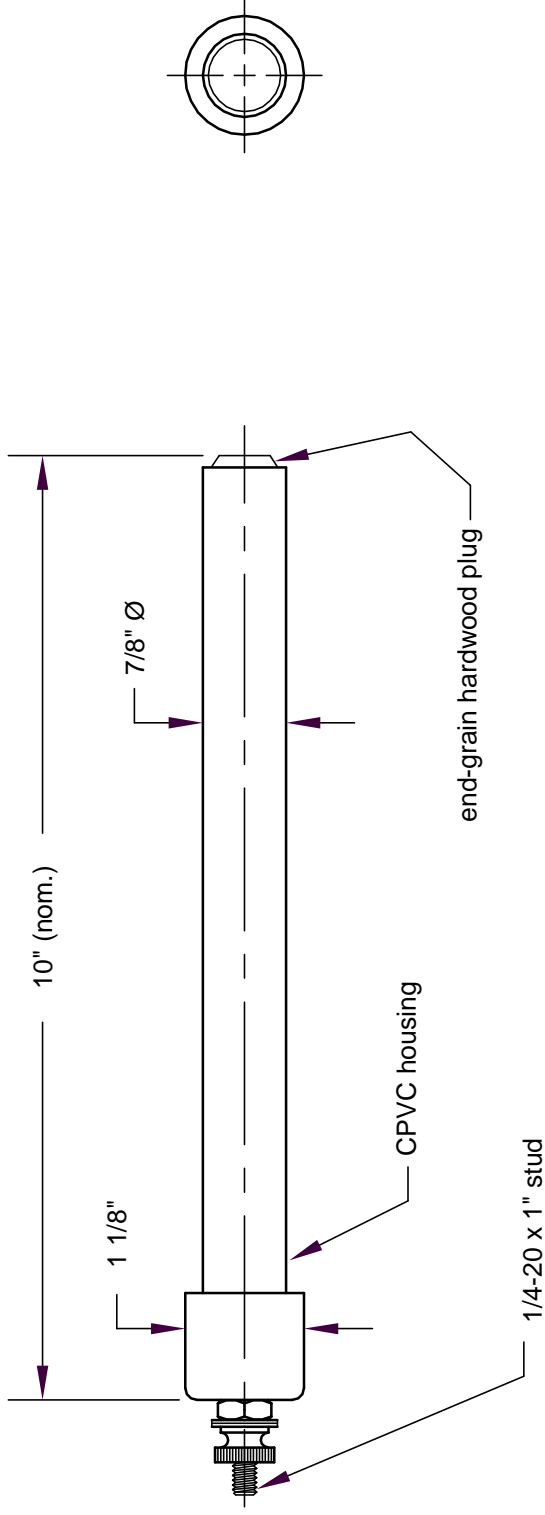
DRAWN BY FJA

DRAWING NUMBER IX06ASY

Specify as EDI Model IX07-xxx-ST
 xxx = element type

Element Types

AGG = Saturated gelled Ag/AgCl
 CUG = Saturated gelled Cu/CuSO4



Reduced diameter version of Model IT

©EDI, 1999



electrochemical devices, inc.
 PO Box 31, Albion, RI 02802 401-333-6112

Portable Gelled Reference

SCALE	HALF	DATE	12/27/99	DRAWN BY	FJA	DRAWING NUMBER	IX07ASY
-------	------	------	----------	----------	-----	----------------	---------

Specify as EDI Model IX08zz-xxx-yy where

zz = option codes, M, A, or S
 xxx = element type, AGG or CUG
 yy = termination, LWnnn or CWnnn

Option Codes

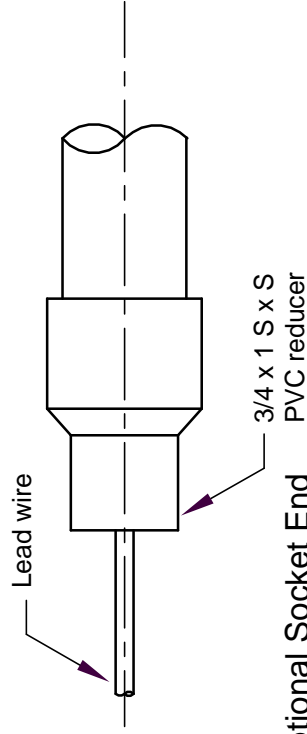
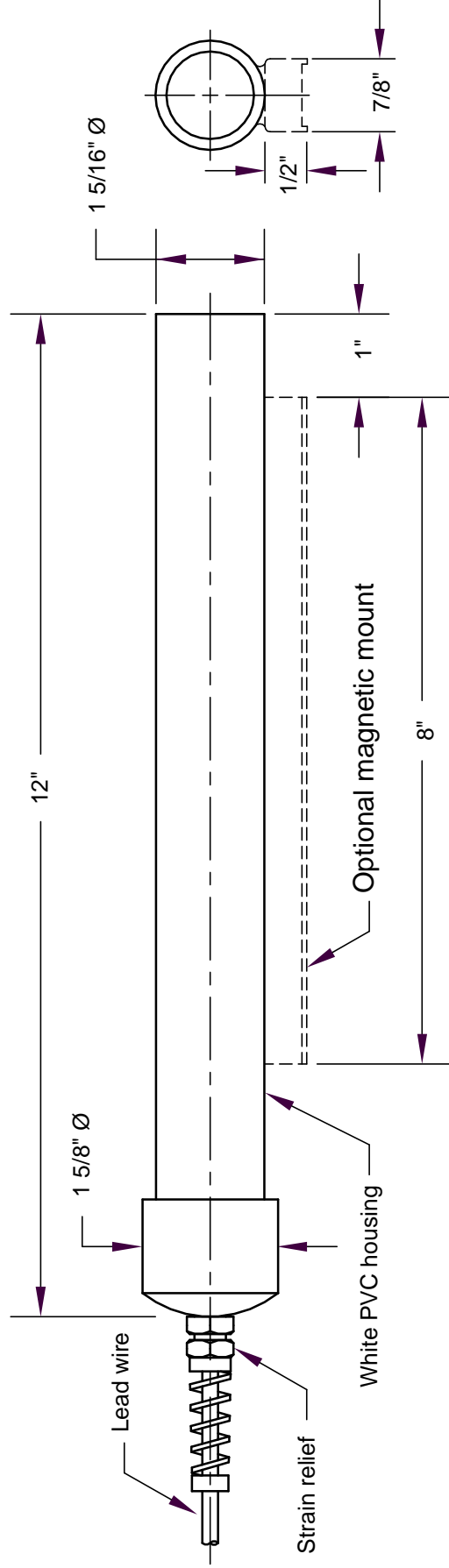
M = Magnetic mount
 A = Antifreeze protection to -70F
 S = 3/4 IPS socket end

Element Types

AGG = Saturated gelled Ag/AgCl
 CUG = Saturated gelled Cu/CuSO4

Termination Types

LWnnn - nnn ft. #12 AWG THHN lead wire
 CW - custom wire, as specified by customer



Optional Socket End

Note: socket end allows 3/4 PVC pipe or conduit to be directly cemented to reference.

Model IX08 is an extended life version of Model IR.
 The length has been extended to 12" to provide
 for a design life of 30 years.



electrochemical devices, inc.
 PO Box 31, Albion, RI 02802 401-333-6112

Permanent Immersion Reference

©EDI, 2001

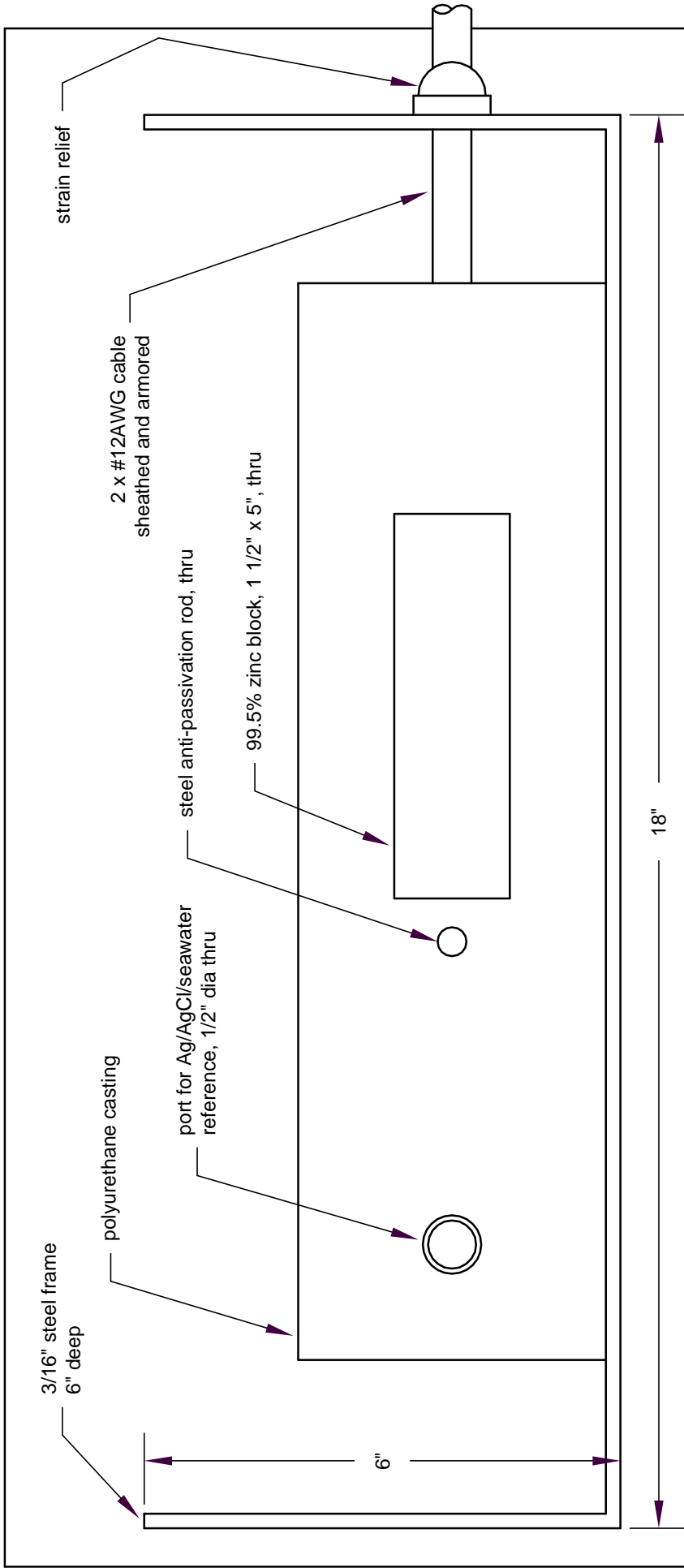
SCALE HALF

DATE 05/09/01

DRAWN BY FJA

DRAWING NUMBER

IX08ASY



Model IX09 is a dual element reference electrode designed for use in clean seawater. One element is 99.5% zinc; the other is an Ag/AgCl/seawater reference electrode. Both the zinc block and the sensing port for the Ag/AgCl reference extend through the polyurethane housing. The design life of Model IX09 is 25 years.

This unit would typically be installed by welding the steel frame to the structure. Other frame styles can be provided to suit specific installation requirements.

Specify as EDI Model IX09-AGD-LWnnn where nnn is length of cable in feet.

©EDI, 2002



electrochemical devices, inc.
PO Box 31, Albion, RI 02802 401-333-6112

Dual Element Immersion Reference

SCALE 1/2	DATE 03/01/02	DRAWN BY FJA	DRAWING NUMBER IX09.ASY
-----------	---------------	--------------	-------------------------

Specify as EDI Model IX10-xxx-yy where

xxx = element type, AGG or CUG

yy = termination, LWnnn or CWnnn

Element Types

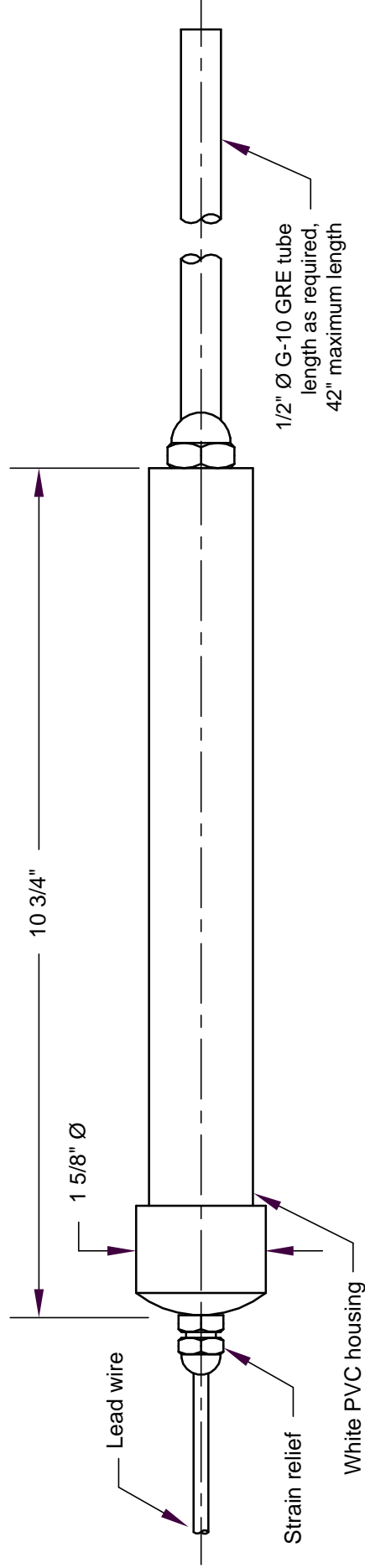
AGG = Saturated gelled Ag/AgCl

CUG = Saturated gelled Cu/CuSO4

Termination Types

LWnnn - nnn ft. #12 AWG THHN lead wire

CW - custom wire, as specified by customer



Model IX10 is Model IR with an extended bridge attached.

©EDI, 2002



electrochemical devices, inc.
PO Box 31, Albion, RI 02802 401-333-6112

Permanent Immersion Reference

SCALE HALF

DATE 10/22/02

DRAWN BY FJA

DRAWING NUMBER IX10ASY