

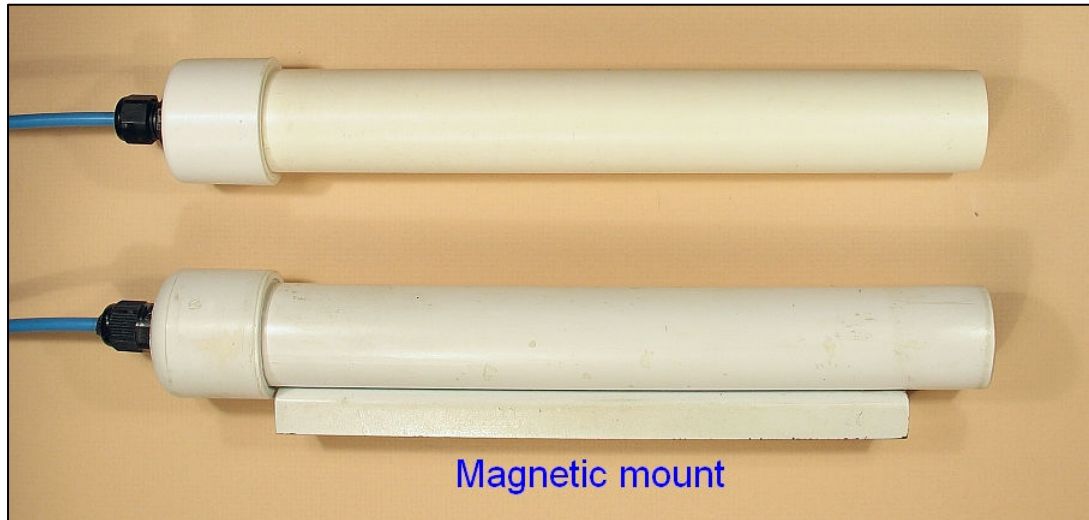
Model IR - Immersion Reference

Typical Applications:

- Elevated water tanks, standpipes, ground storage tanks, clarifiers, traveling screens, trash racks, submerged pipelines, locks, dams, dock structures

Featuring:

- Rugged 1 inch white PVC housing
- 25 year design life
- Optional magnetic mount for easy attachment to steel structure
- Optional antifreeze protection to -30F (-35C)



Housing Specifications

1 5/8 inch (4 cm) dia. x 10 3/4 inch (28 cm) long
Heavy duty strain relief at wire end
Shipping weight without wire – 1 lb (1/2 kg)

Element Specifications

Design life - 25 yrs.
Shelf life - 1 yr. with end cap in place
Max. Temp. - +140F (60C)
Min. Temp. - + 10F (-12C)

Element Types

AGG - saturated gelled Ag/AgCl
CUG - saturated gelled Cu/CuSO₄

Terminations

LWnnn - nnn ft. #12 AWG RHW/USE
CWnnn - nnn ft. of custom wire

Options

M - Magnetic mount
A - Antifreeze protection to -30F (-35C)
S - 3/4 IPS socket end

Model Designation

Specify as EDI Model IRzz-xxx-yy
zz = Option code
xxx = Element type
yy = Termination type

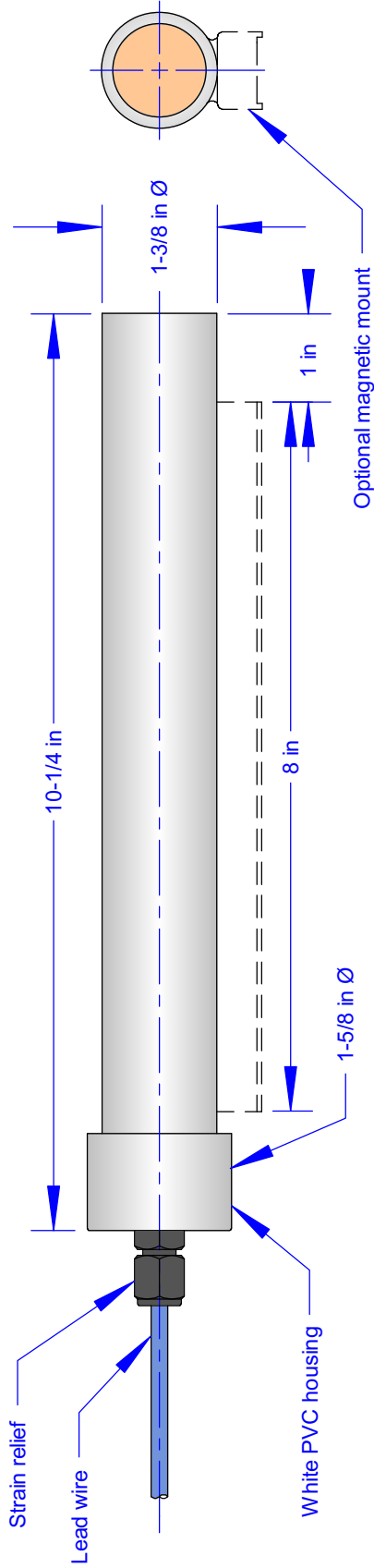
The **Model IR** is designed for long term installation in an aqueous environment. It can be directly suspended by its lead wire, cemented directly to 3/4 inch PVC conduit or securely attached to a steel structure with the optional magnetic mount. Antifreeze protection is also available for those situations where the electrode may be exposed to temperatures down to -30F (-35C).

electrochemical devices, inc.

Sales office: P.O. Box 355; Belmont, MA 02478-0003
Tel: 617-484-9085 **Fax:** 617-484-3923
Main office: P.O. Box 31; Albion, RI 02802-0031
Tel: 401-333-6112 **Fax:** 401-333-9724

*I Series
Immersion
Reference
Electrodes*





Specify as EDI Model IRZZ-xxx-yy where

zz = option codes: M, A, or S

xxx = element type: AGG or CUG

yy = termination: LWnnn or CWnnn

Option Codes

M = Magnetic mount

A - Antifreeze protection to -30F (-35C)

S = 3/4 in IPS socket end

Element Types

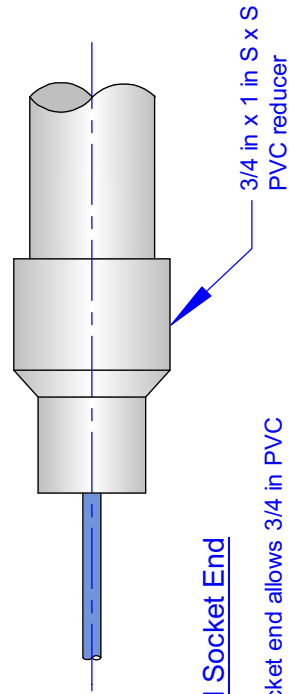
AGG = Saturated gelled silver/silver chloride

CUG = Saturated gelled copper/copper sulfate

Termination Types

LWnnn = nnn ft #12 AWG RHW/USE lead wire

CWnnn = nnn ft custom wire as specified by customer



Optional Socket End

Note: socket end allows 3/4 in PVC pipe or conduit to be directly cemented to reference electrode.

Permanent Immersion Reference