

# Model FX – Special Products

EDI can customize any of its through-wall references or design special products to meet the unique requirements of a particular application. These products are designated as Model FX followed by a sequence number. Contact us for additional information on any of these products.

## Special and Custom Through-Wall Products:

<u>Model</u>	<u>Description</u>
<b>FX01</b>	Model FS standard reference with varying extensions. These are used where a shallow protruding reference is required such as measuring the potential inside a pipe with the reference located in a tee fitting.
<b>FX02</b>	Model FX02 is a through-wall reference with a fully threaded body (1 inch-8 NC thread). It is designed for installation on a cast iron waterbox that cannot have threaded adapters welded to it.
<b>FX03</b>	Model FX03 is designed to be flush mounted on the wall of a large diameter water tunnel. Dimensions are sized to suit the box recess.
<b>FX04</b>	Model FX04 is a variant of Model FX01A. The flat membrane has been replaced with a hemispherical one so it can be used with potential wheels.
<b>FX05</b>	Model FX05 is a variant of Model FX01A. The flat membrane has been replaced with a ¼ inch dia luggin capillary for measuring potentials behind steel sheet piling.
<b>FX06</b>	Model FX06 is a variant of Model FH. The 1 inch NPT stainless steel nipple has been replaced with swaged steel nipple: ¾ inch NPT on the vessel end and 1 inch NPT on the termination end.
<b>FX07</b>	Model FX07 is a variant of Model FE-BDG. It is designed to mate with a Cosasco RBS Retriever so that potential measurements may be made inside a pressure chamber with a reference located outside the chamber.
<b>FX08</b>	Model FX08 is a zinc probe.
<b>FX09</b>	Model FX09 is a variant of Model FA in which the bushing at the wire end has been removed. It is used with Conax type through-wall glands.

www.edi-cp.com

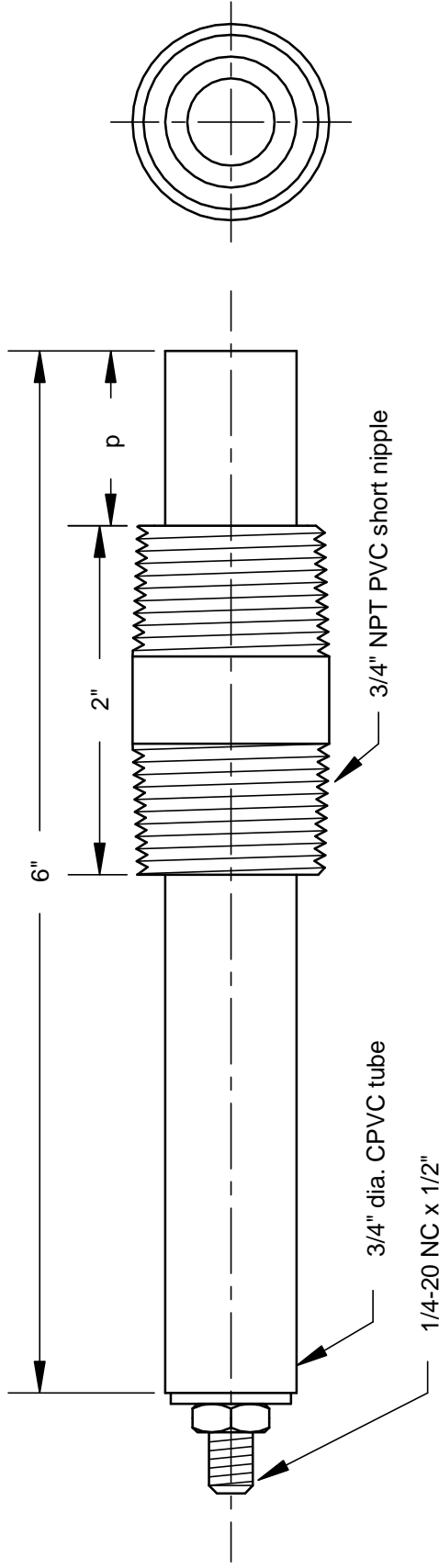


## electrochemical devices, inc.

**Sales office:** P.O. Box 355; Belmont, MA 02478-0003  
**Tel:** 617-484-9085      **Fax:** 617-484-3923  
**Main office:** P.O. Box 31; Albion, RI 02802-0031  
**Tel:** 401-333-6112      **Fax:** 401-333-9724

***F Series  
Through-Wall  
Reference  
Electrodes***

## Model FX01z -xxx-ST - Stud End



Note: xxx in model designation refers to element type

AGD = Ag/AgCl (dry)  
 AGG = Ag/AgCl (saturated, gelled)  
 CUG = Cu/CuSO<sub>4</sub> (saturated, gelled)  
 ZIN = 99.99% zinc

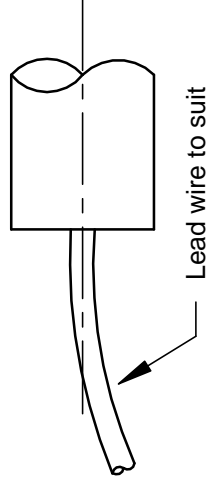
z in model designation refers to protrusion, p

A: no nipple  
 B: p = 0  
 C: p = 1"  
 D: p = 2"  
 E: p = 3"  
 a 4" protrusion is Model FS

Model FX01 is a variant of Model FS. It is used when a shallower protrusion is required such as measuring the potential inside a pipe with the reference electrode located in a tee.

## Model FX01z -xxx-LWnnn - Wire End

Note: nnn = lead wire length in feet



©EDI, 2003

**edi** electrochemical devices, inc.  
 PO Box 31, Albion, RI 02802 401-333-6112

## Through-Wall Reference Electrode

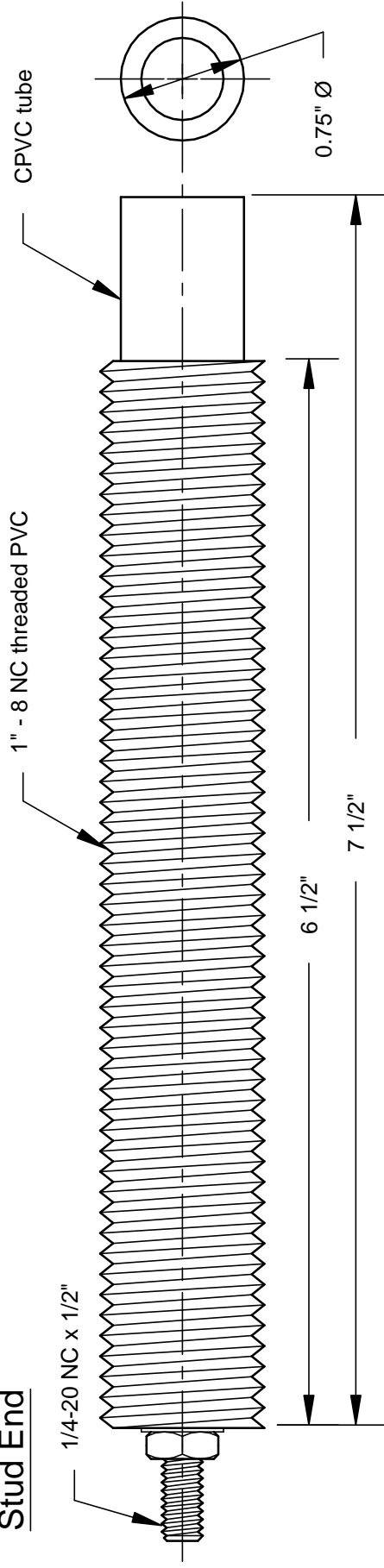
SCALE FULL

DATE 05/24/03

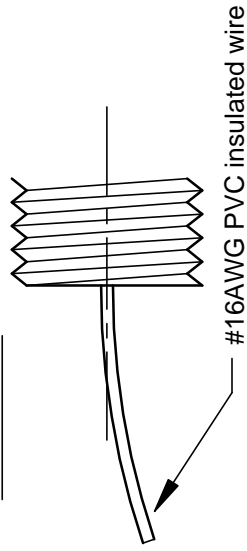
DRAWN BY FJA

DRAWING NUMBER FX01ASY

### Stud End



### Wire End



Specify as EDI Model FX02-xxx-yy where xxx refers to element type

AGD = Ag/AgCl (dry)

AGG = Ag/AgCl (saturated, gelled)

CUG = Cu/CuSO4 (saturated, gelled)

ZIN = 99.99% Zinc

and yy refers to termination type

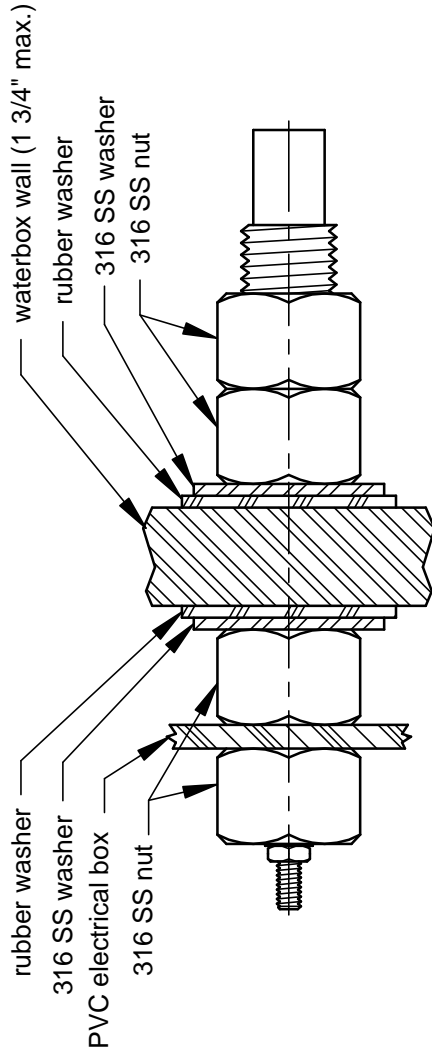
ST = Stud end

SW = Short wire (1 ft. #16AWG PVC insul.)

LWnnn = Long wire

nnn ft. #16 AWG PVC insulated wire

Model FX02 is a variant of FS for use on cast iron waterboxes which cannot be directly threaded or welded.



Typical Installation (1/2X)

©EDI, 2003



electrochemical devices, inc.  
PO Box 31, Albion, RI 02802 401-333-6112

## Full-threaded Through Wall Reference

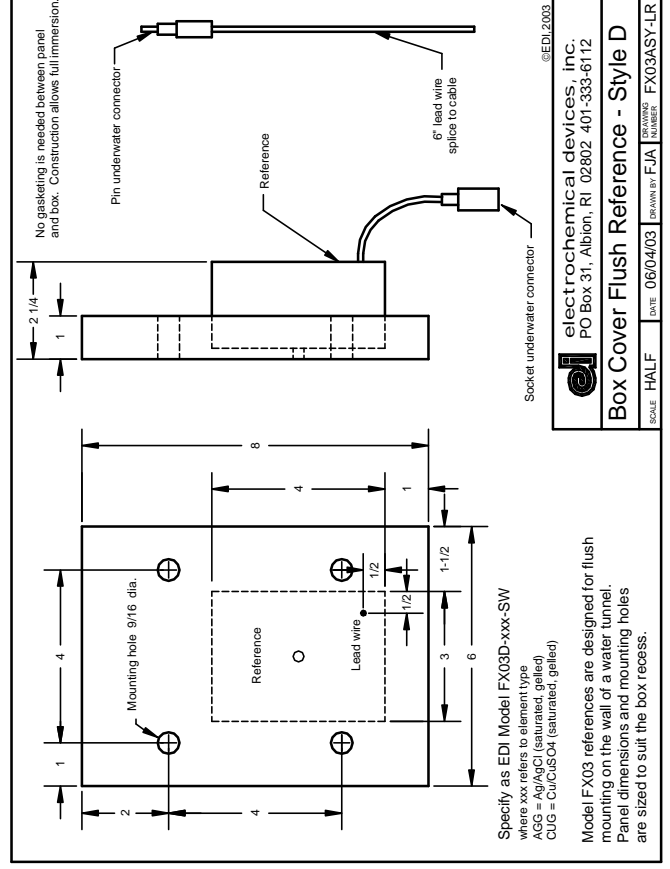
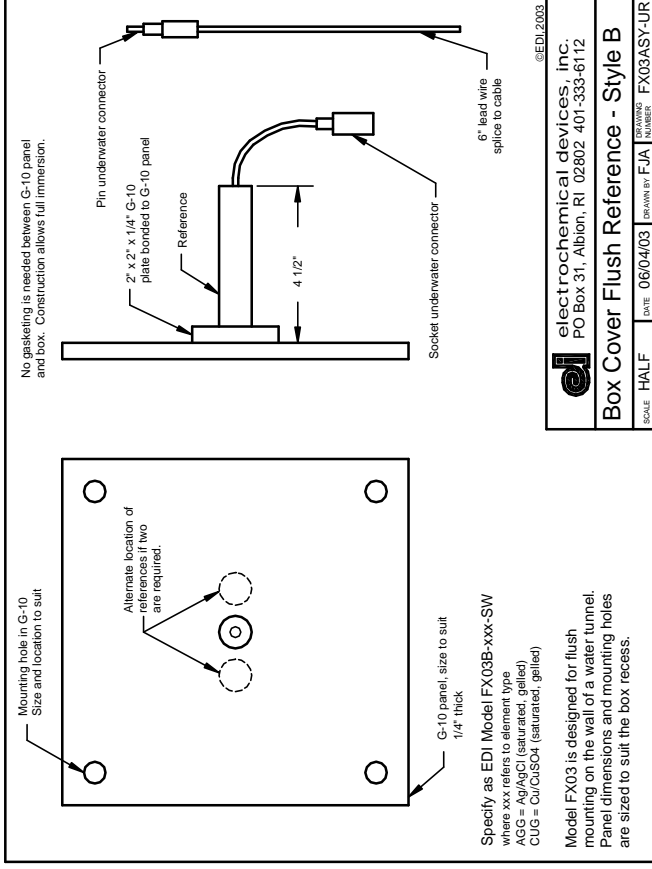
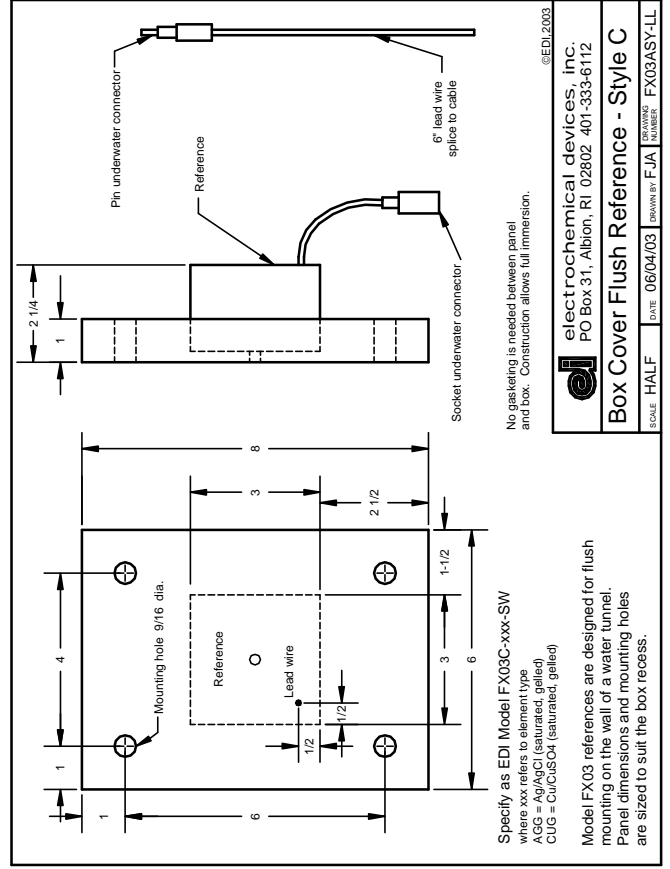
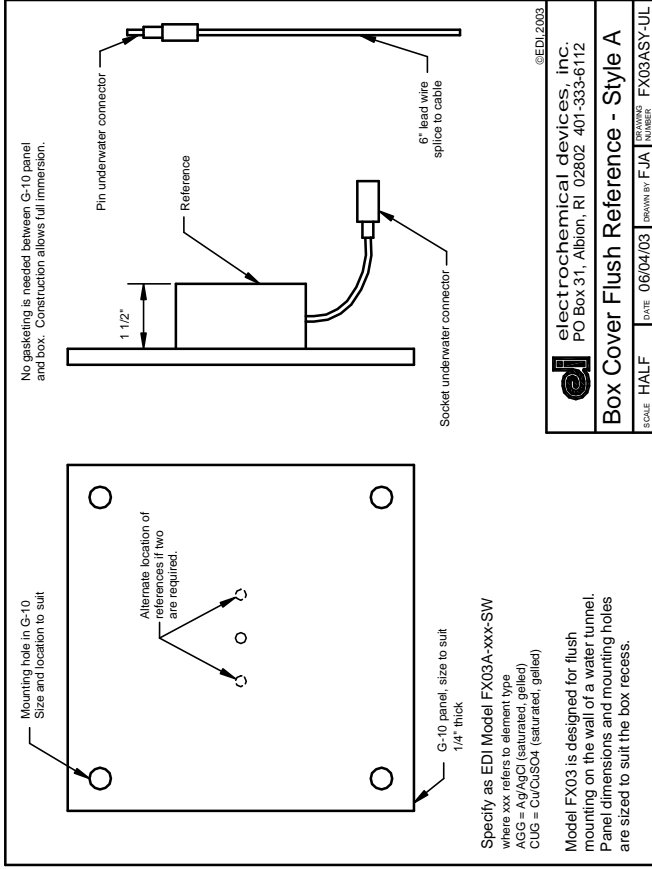
SCALE FULL

DATE 05/24/03

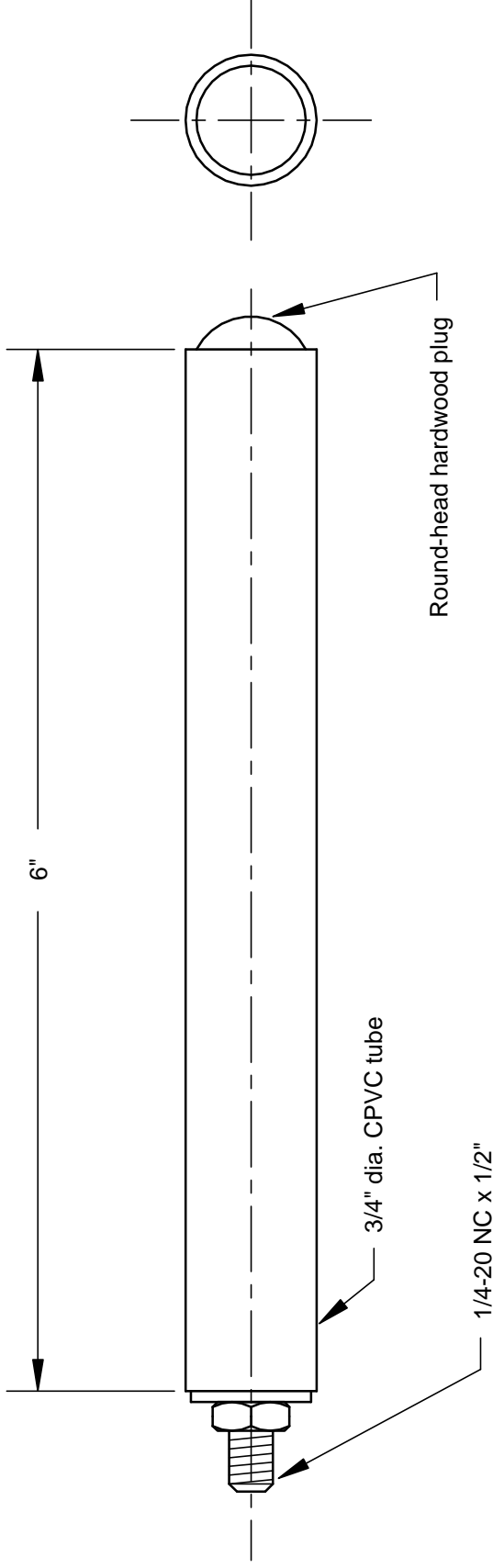
DRAWN BY FJA

DRAWING NUMBER

FX02ASY



### Model FX04-xxx-ST - Stud End



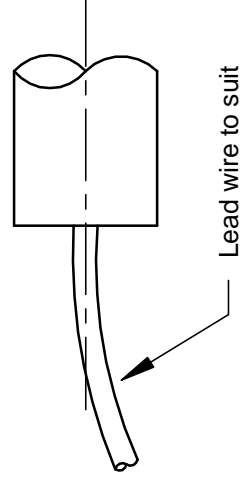
Note: xxx in model designation refers to element type

AGG = Ag/AgCl (saturated, gelled)

CUG = Cu/CuSO<sub>4</sub> (saturated, gelled)

### Model FX04-xxx-LWnnn - Wire End

Note: nnn = lead wire length in feet



©EDI, 2003

Model FX04 is a variant of FX01A.  
The flat membrane has been replaced  
with a hemispherical one so it can be  
used with potential wheels.



electrochemical devices, inc.  
PO Box 31, Albion, RI 02802 401-333-6112

## Button-head Reference Electrode

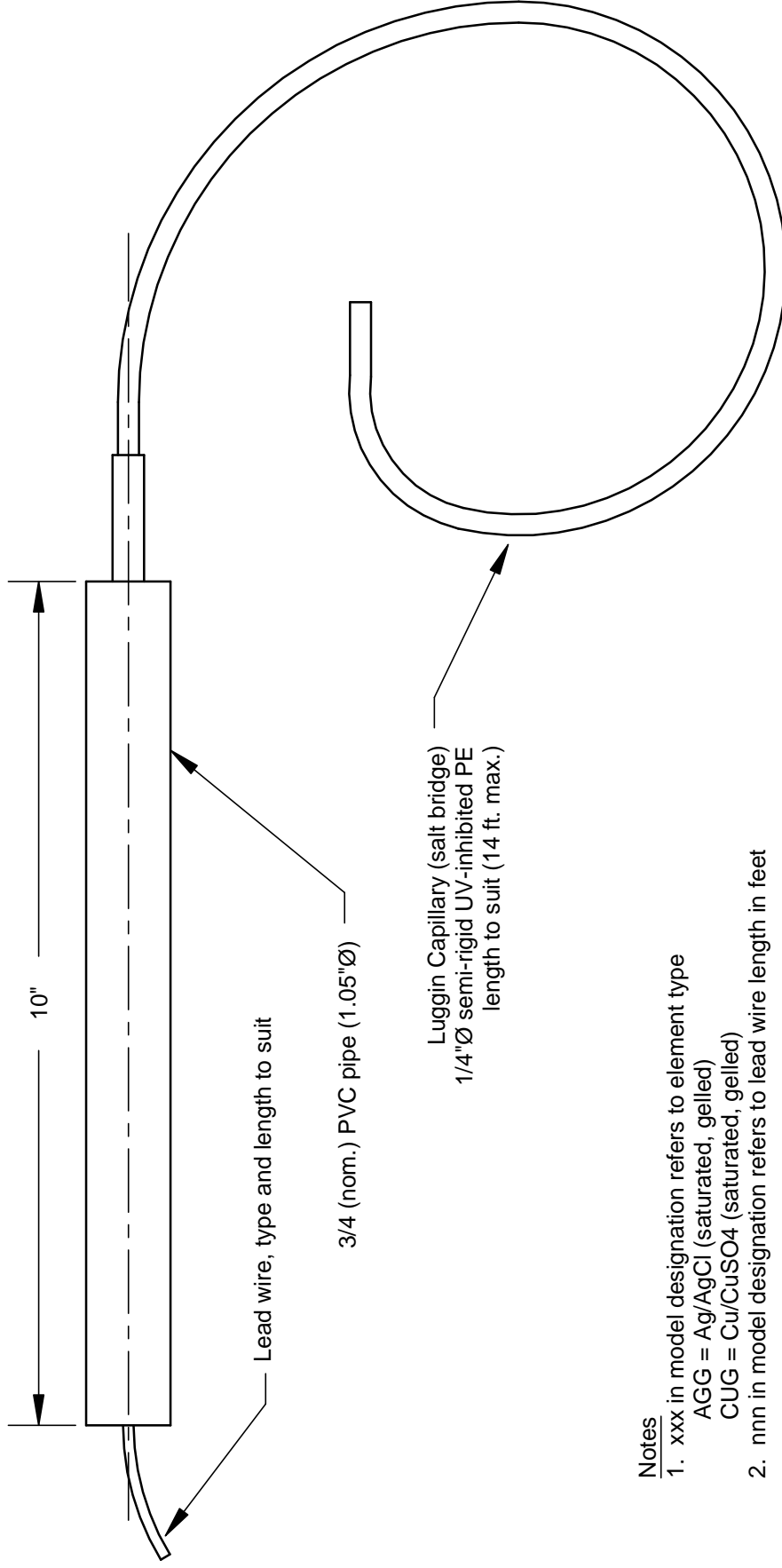
SCALE FULL

DATE 05/24/03

DRAWN BY FJA

DRAWING NUMBER FX04ASY

## Model FX05-xxx-LWnnn



### Notes

- xxx in model designation refers to element type  
AGG = Ag/AgCl (saturated, gelled)  
CUG = Cu/CuSO<sub>4</sub> (saturated, gelled)
- nnn in model designation refers to lead wire length in feet

Model FX05 has a small diameter luggin permanently attached to the reference. It is used to measure potentials behind sheet piling.

©EDI, 2003



electrochemical devices, inc.  
PO Box 31, Albion, RI 02802 401-333-6112

## Reference Electrode with Luggin

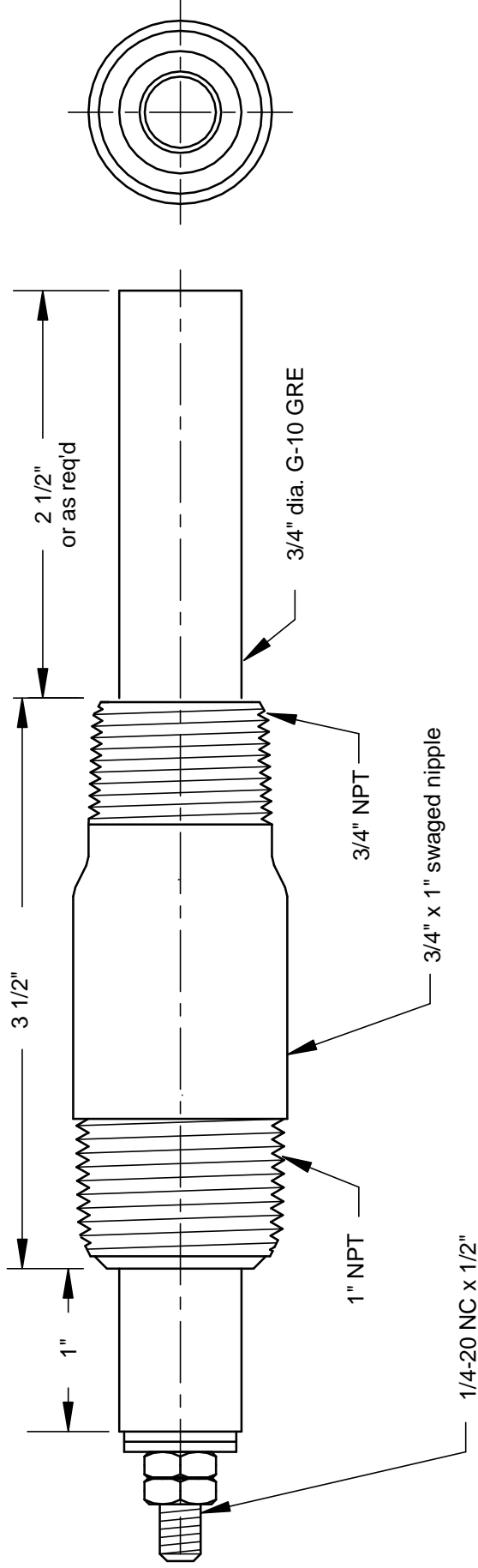
SCALE FULL

DATE 05/24/03

DRAWN BY FJA

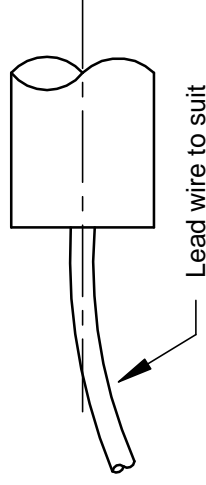
DRAWING NUMBER FX05ASY

## Model FX06-xxx-ST - Stud End



## Model FX06-xxx-LWnnn - Wire End

Note: nnn = lead wire length in feet



Note: xxx in model designation refers to element type

- AGD = Ag/AgCl (dry)
- AGG = Ag/AgCl (saturated, gelled)
- CUG = Cu/CuSO<sub>4</sub> (saturated, gelled)
- ZIN = 99.99% zinc

©EDI, 2003

**edi** electrochemical devices, inc.  
PO Box 31, Albion, RI 02802 401-333-6112

## Through-Wall Reference Electrode

SCALE FULL

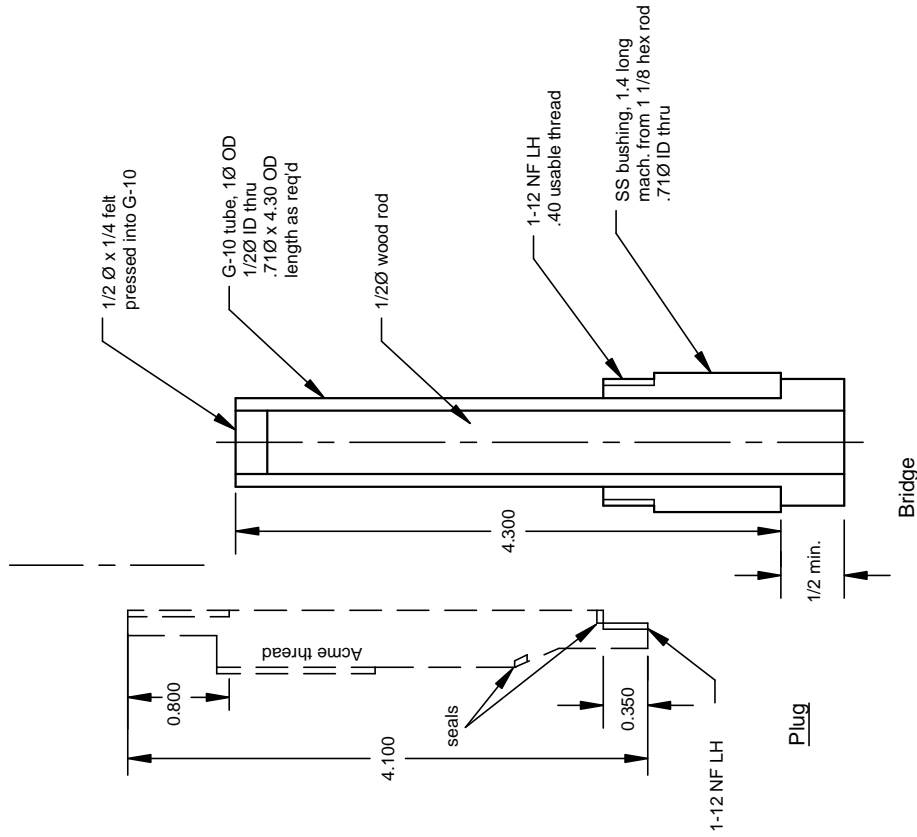
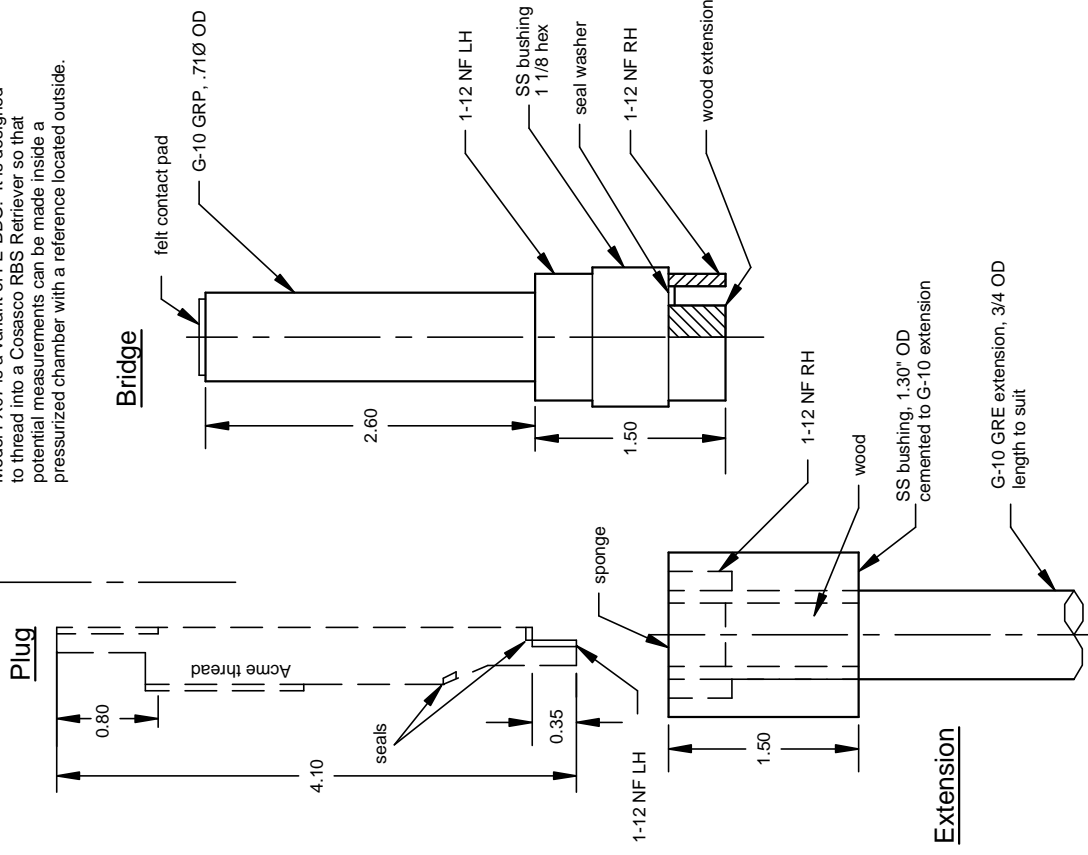
DATE 05/24/03

DRAWN BY FJA

DRAWING NUMBER FX06ASY

Model FX06 is a variant of FH for use in 3/4" NPT tapped holes.

Model FX07 is a variant of FE-BDG. It is designed to thread into a Cosasco RBS Retriever so that potential measurements can be made inside a pressurized chamber with a reference located outside.



electrochemical devices, inc.  
PO Box 31, Albion, RI 02802 401-333-6112



Special Bridge

©EDI,2003

SCALE FULL DATE 05/24/03  
DRAWING NUMBER FX07ASY-R

electrochemical devices, inc.  
PO Box 31, Albion, RI 02802 401-333-6112

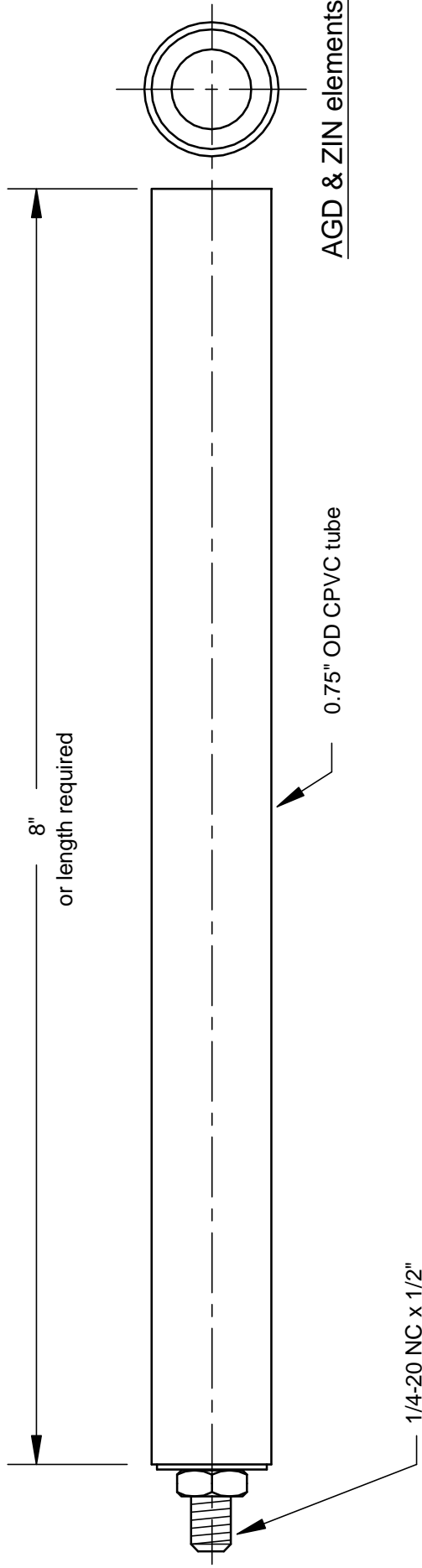


Special Bridge - Detail

©EDI,2003

SCALE FULL DATE 05/24/03  
DRAWING NUMBER FX07ASY-L

### Model FX08-xxx-ST - Stud End

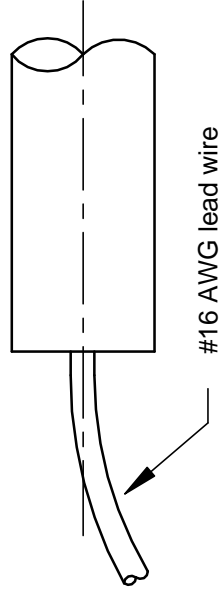


### Model FX08-xxx-SW - Short Wire

Note: termination is 1 foot of #16 AWG lead wire

### Model FX08-xxx-LW - Long Wire

Note: nnn = length in feet of #16 AWG lead wire



Note: xxx in model designation refers to element type

AGD = Ag/AgCl (dry)

AGG = Ag/AgCl (saturated, gelled)

CUG = Cu/CuSO4 (saturated, gelled)

ZIN = 99.99% zinc

©EDI, 2003



electrochemical devices, inc.  
PO Box 31, Albion, RI 02802 401-333-6112

## Adjustable Probe Reference Electrode

SCALE FULL

DATE 05/24/03

DRAWN BY FJA

DRAWING NUMBER

FX08ASY