

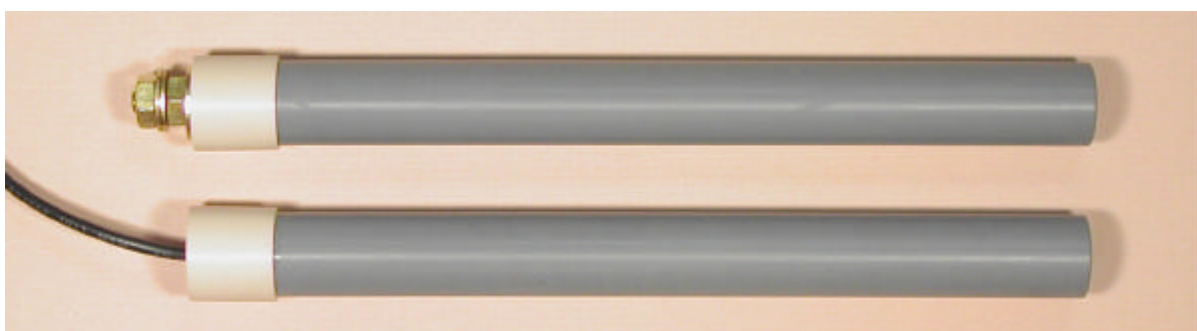
Model FA – Adjustable Probe

Typical Applications:

- Condenser waterboxes, circulating pipe, tanks and pressure vessels

Featuring:

- Ability to select the exact location for taking readings anywhere from 1 inch to 4 inches beyond the inner wall
- CPVC housing rated to 180F (82C)
- Four element choices to enable use in any environment
- Available with stud or wire end



Housing Specifications

0.840 inch bushing at termination
CPVC tube, 3/4 in. (2 cm) dia. x 8 in. (20 cm)
Shipping weight – 1/2 lb (1/4 kg)

Element Types

AGG - saturated gelled Ag/AgCl
CUG - saturated gelled Cu/CuSO₄
AGD - dry-type Ag/AgCl
ZIN - 99.99% Zinc

Design Compatibility

- Can be installed with a 3/4 inch gland nut such as Conax Model PG5-150-A-N or equivalent. This permits easy extraction without having to disconnect any wires.
- Termination end will mate to any 1/2 inch PVC pipe or conduit socket fittings. These fittings can be cemented directly to the 0.840 inch bushing at that end.

Terminations

ST - 1/4-20 NC threaded stud
SW - 1ft. (30 cm) #16 AWG PVC insulated wire
LWnnn - nnn ft. #16 AWG PVC insulated wire

Model Designation

Specify as EDI Model FA-xxx-yy
xxx = Element type
yy = Termination type

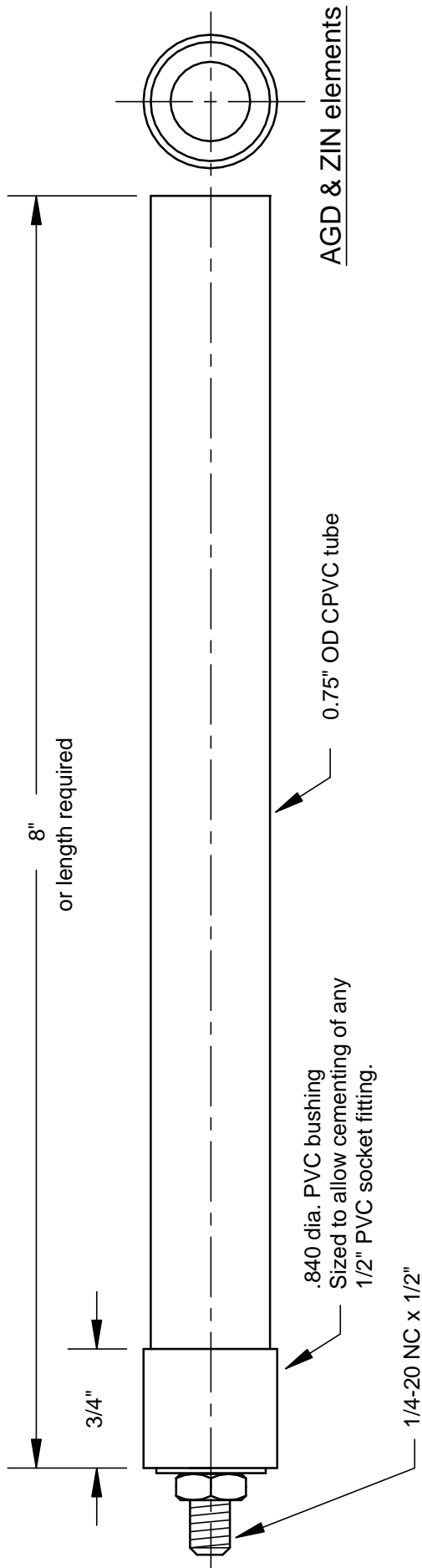
electrochemical devices, inc.

Sales office: P.O. Box 355; Belmont, MA 02478-0003
Tel: 617-484-9085 **Fax:** 617-484-3923
Main office: P.O. Box 31; Albion, RI 02802-0031
Tel: 401-333-6112 **Fax:** 401-333-9724

*F Series
Through-Wall
Reference
Electrodes*

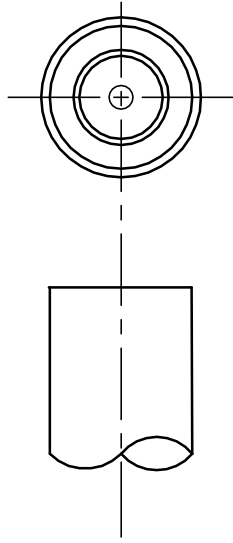


Model FA-xxx-ST - Stud End



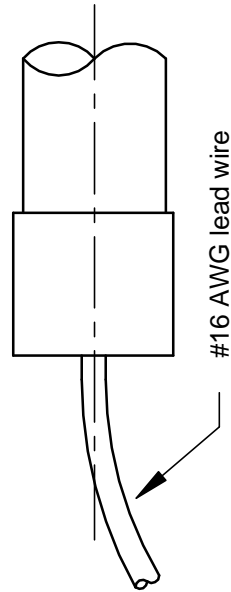
Model FA-xxx-SW - Short Wire

Note: termination is 1 foot of #16 AWG lead wire



Model FA-xxx-LW - Long Wire

Note: nnn = length in feet of #16 AWG lead wire



Note: xxx in model designation refers to element type

AGD = Ag/AgCl (dry)

AGG = Ag/AgCl (saturated, gelled)

CUG = Cu/CuSO4 (saturated, gelled)

ZIN = 99.99% zinc

© EDI, 2003



electrochemical devices, inc.
PO Box 31, Albion, RI 02802 401-333-6112

Adjustable Probe Reference Electrode

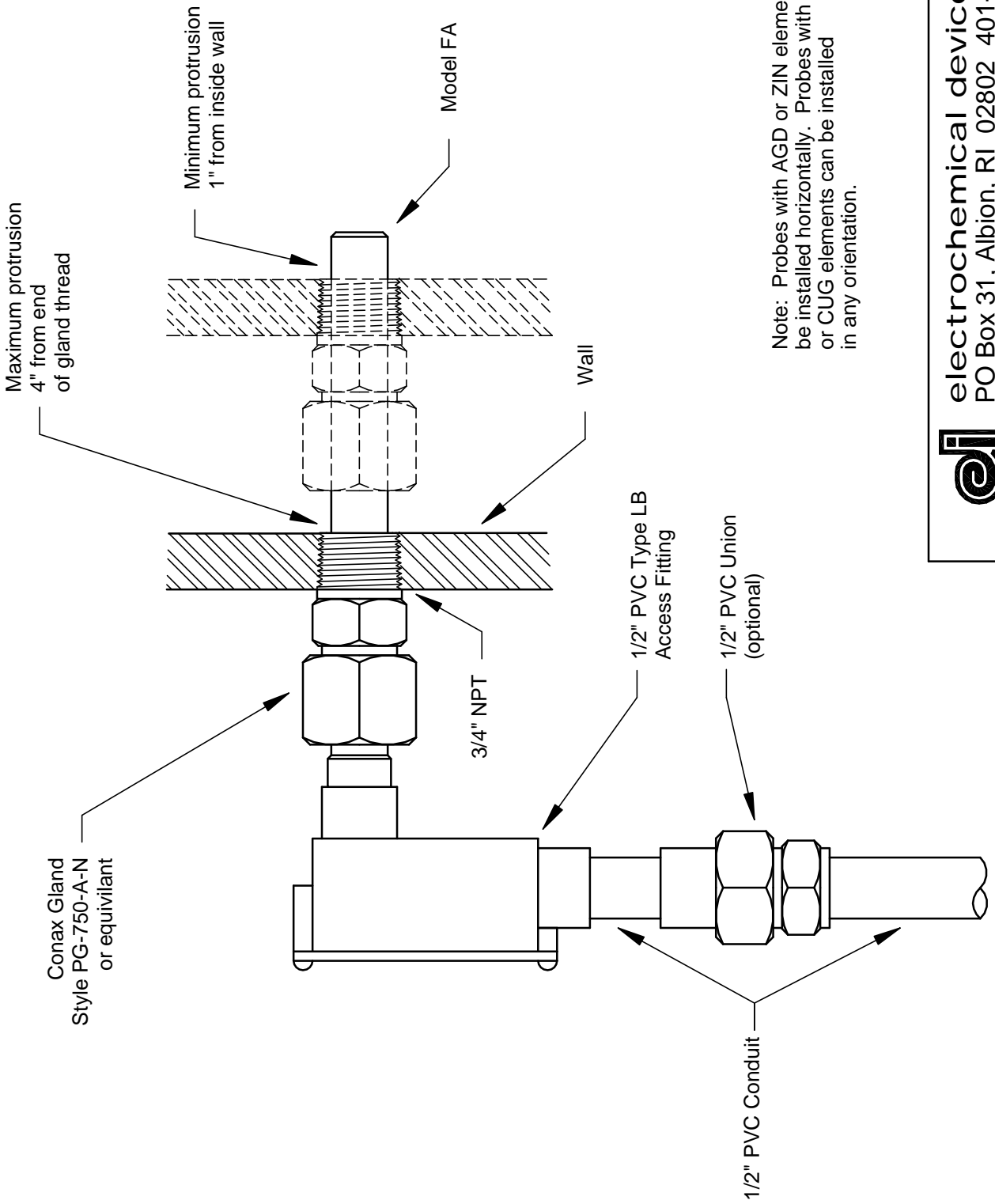
SCALE FULL

DATE 05/24/03

DRAWN BY FJA

DRAWING NUMBER

FAASY



Note: Probes with AGD or ZIN elements must be installed horizontally. Probes with AGG or CUG elements can be installed in any orientation.

©EDI, 2003

edi electrochemical devices, inc.
 PO Box 31, Albion, RI 02802 401-333-6112

Adjustable Probe Installation (typ.)

SCALE	HALF	DATE	05/24/03	DRAWN BY	FJA	DRAWING NUMBER	FAAPP1
-------	------	------	----------	----------	-----	----------------	--------