

Model CP-REB – Rebar Probe

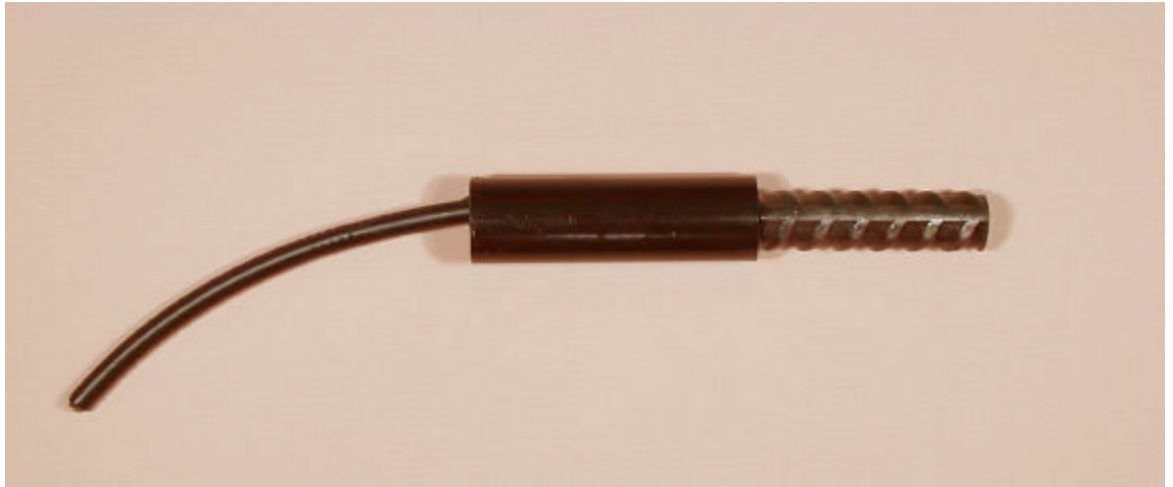
Typical Applications

Bridge decks and substructures, parking garages, docks and buildings

Featuring

Reinforcing steel bar element

Used for corrosion rate monitoring by linear polarization resistance



Housing Specifications

¾ in. (2 cm) dia. x 3 ½ in. (9 cm) long
Shipping weight – ½ lb (¼ kg)

Terminations

SWnnn - #14 AWG HMW/PE, nnn ft. long
2Wnnn - two #12 THHN/THWN,
nnn ft. long

Element Specifications

#4 deformed reinforcing bar (rebar)

Element Types

REB –rebar steel

Model Designation

Specify as EDI Model CP-REB-SWnnn
nnn = Length of lead wire

Application Notes:

The **Model CP-REB** should be installed the same distance below the surface as the outer rebar net. It is often used in conjunction with an Ag/AgCl reference electrode such as the EDI **Model CB-AGG** for linear polarization resistance measurements of corrosion rate. In this application, the rebar probe is the working electrode while the rebar net is the counter electrode. By periodically monitoring corrosion rate, the efficacy of sealers, membranes and inhibitors can be verified.

electrochemical devices, inc.

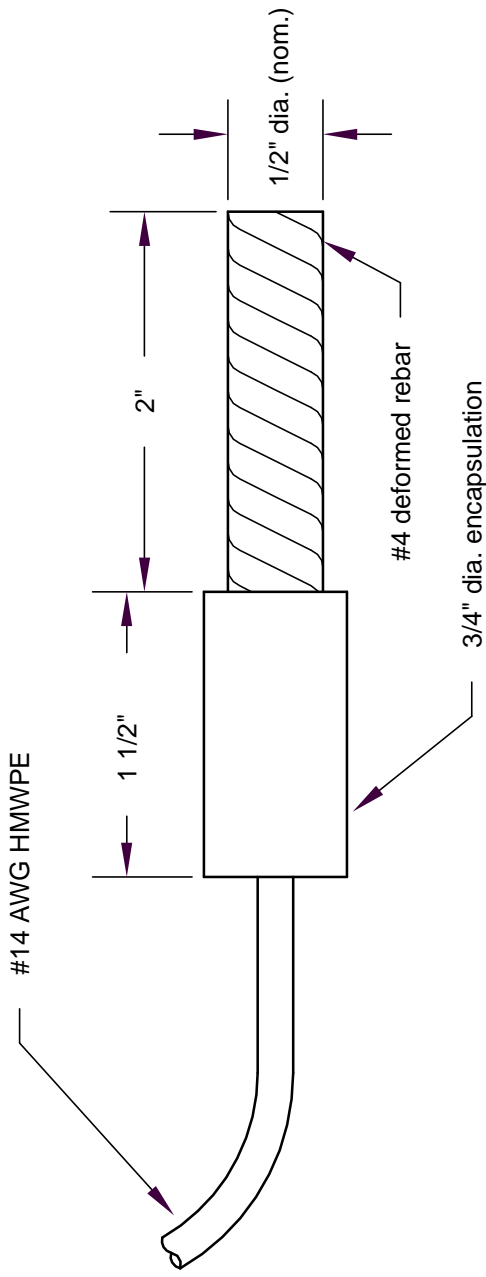
Sales office: P.O. Box 355; Belmont, MA 02478-0003
Tel: 617-484-9085 **Fax:** 617-484-3923
Main office: P.O. Box 31; Albion, RI 02802-0031
Tel: 401-333-6112 **Fax:** 401-333-9724

*C Series
Concrete
Products*



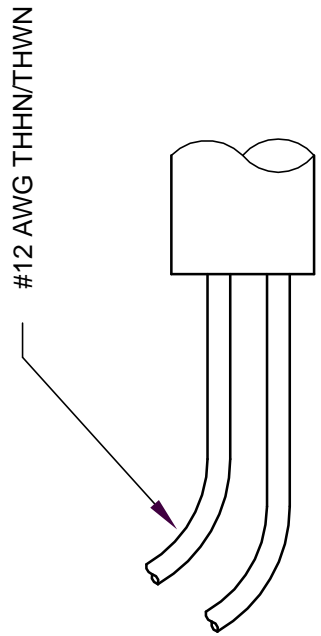
Single Wire Termination

Note: Specify as EDI Model CP-REB-SWnnn where nnn is length of lead wire in feet.



Two Wire Termination

Note: Specify as EDI Model CP-REB-2Wnnn where nnn is length of lead wire in feet.



©EDI, 2001

edi electrochemical devices, inc.
PO Box 31, Albion, RI 02802 401-333-6112

Polarization Probe for Concrete

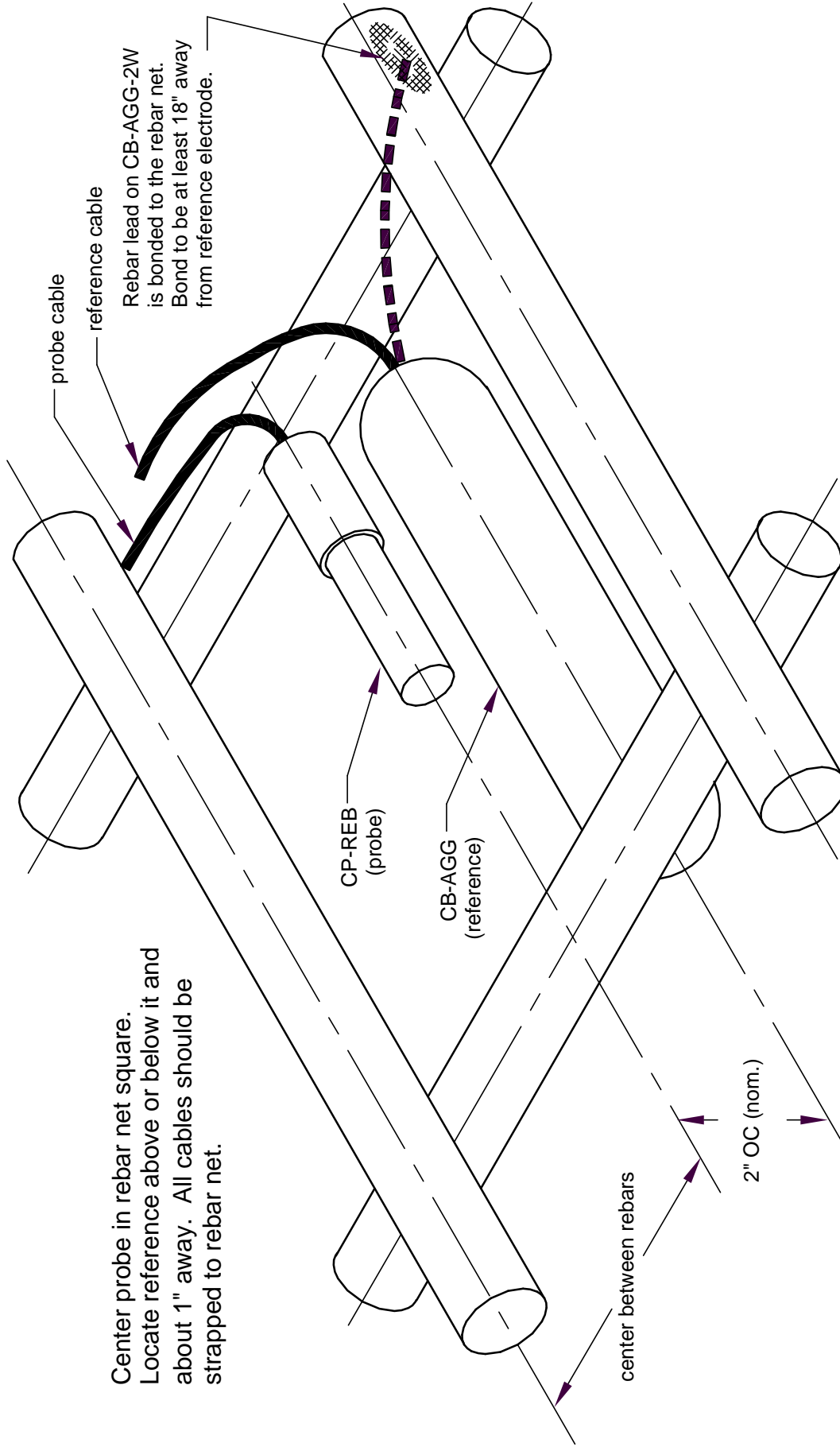
SCALE FULL

DATE 09/17/01

DRAWN BY FJA

DRAWING NO. CPREBASY

Center probe in rebar net square.
 Locate reference above or below it and
 about 1" away. All cables should be
 strapped to rebar net.



To make polarization resistance measurements,
 use the rebar probe (CP-REB) as the working
 electrode and the rebar net as the counter
 electrode

©EDI, 1999



electrochemical devices, inc.
 PO Box 31, Albion, RI 02802 401-333-6112

Polarization Probe Installation

SCALE None

DATE 11/23/99

DRAWN BY FJA

DRAWING NO. CPREBAP1