

## Model AX – Special Products (2)

EDI can customize any of its anodes or design special anodes to meet the unique requirements of a particular application. These products are designated as Model AX followed by a sequence number. Contact us for additional information on any of these products.

### Special and Custom Impressed Current Anodes:

<u>Model</u>	<u>Description</u>
<b>AX11</b>	Model AX11 is a variant of the Model AL low profile strip anode. It is used where the entire anode is immersed such as waterfront structures.
<b>AX12</b>	Model AX12 is a variant of the Model AR probe anode. The anode rod diameter has been increased to 1 inch (2.5 cm) and the glass reinforced epoxy stand-off replaced with heat shrink tube.
<b>AX13</b>	Model AX13 is a variant of the Model AR probe anode. It features an extended standoff length for better current distribution and is used in low flow applications.
<b>AX14</b>	Model AX14 is a rod anode mounted in a PVC U-channel. It is used where the entire anode is immersed such as waterfront structures.
<b>AX15</b>	Model AX15 is a rod anode with a cantilever or tee mount. It is used where the entire anode is immersed such as waterfront structures.
<b>AX16</b>	Model AX16 is a hot tap insertion tool for anodes or reference electrodes with a 1" NPT nipple.

www.edi-cp.com

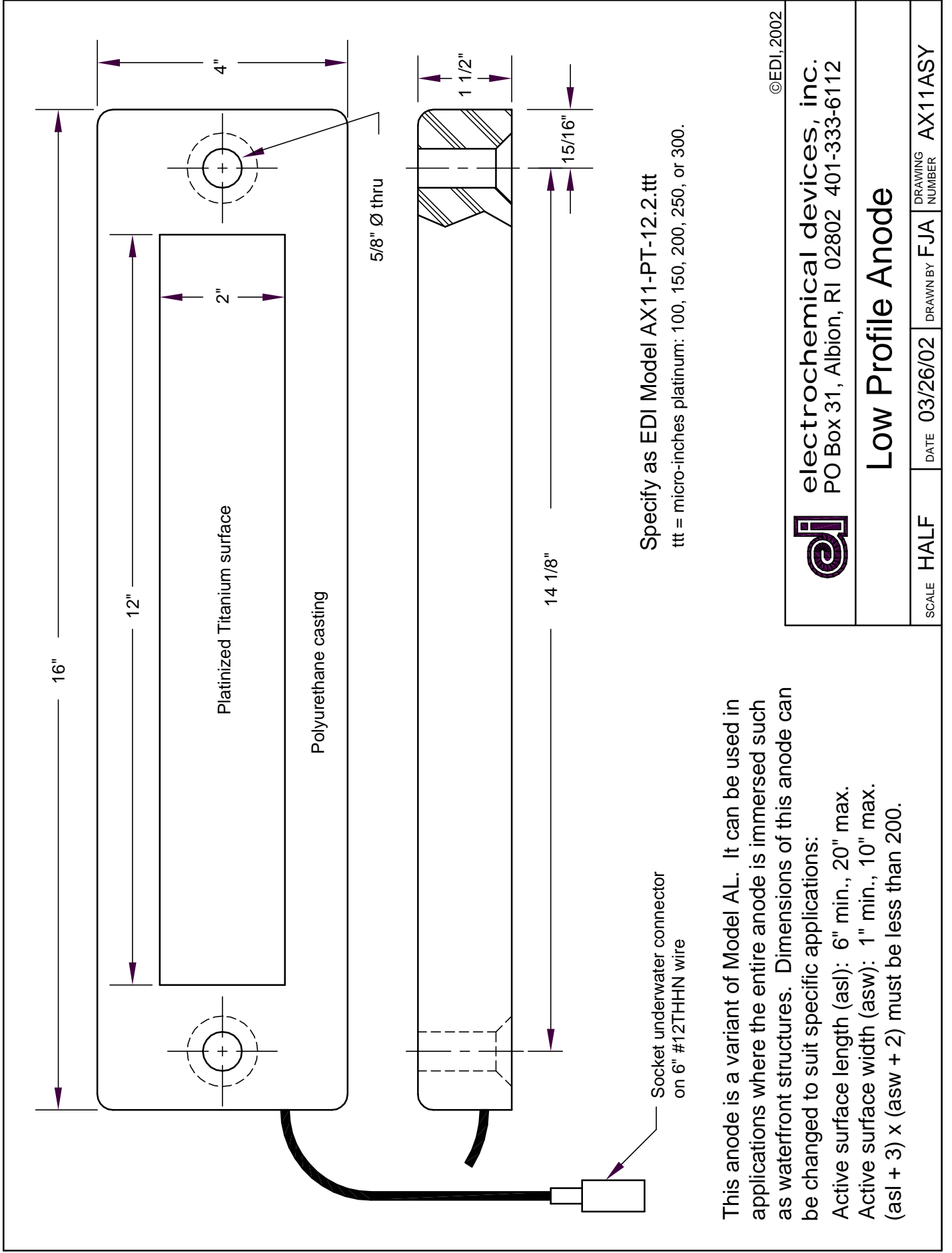


### electrochemical devices, inc.

**Sales office:** P.O. Box 355; Belmont, MA 02478-0003  
**Tel:** 617-484-9085      **Fax:** 617-484-3923

**Main office:** P.O. Box 31; Albion, RI 02802-0031  
**Tel:** 401-333-6112      **Fax:** 401-333-9724

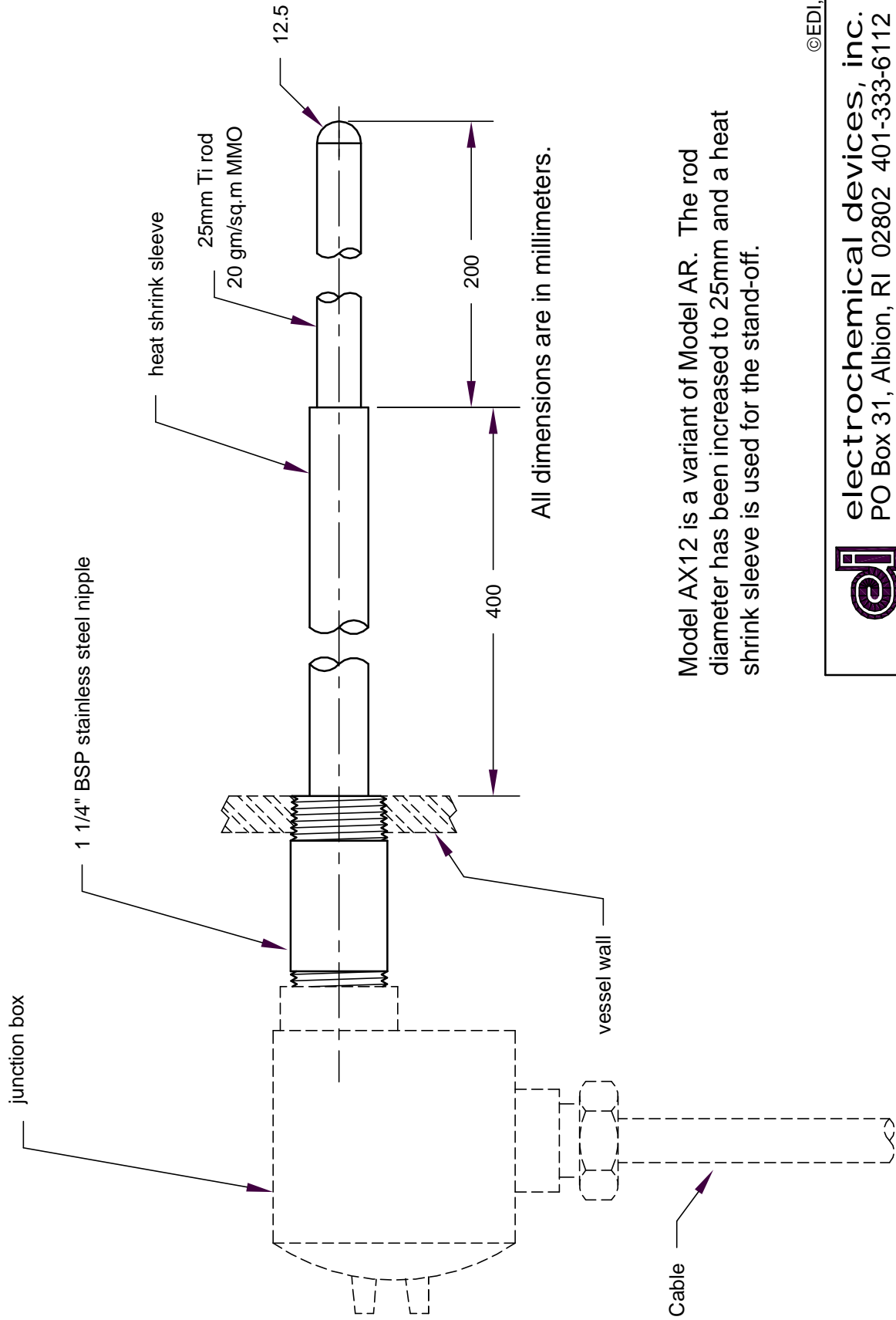
*A Series  
Impressed  
Current Anodes*



This anode is a variant of Model AL. It can be used in applications where the entire anode is immersed such as waterfront structures. Dimensions of this anode can be changed to suit specific applications:

Active surface length (asl): 6" min., 20" max.

Active surface width (asw): 1" min., 10" max. (asl + 3) x (asw + 2) must be less than 200.



All dimensions are in millimeters.

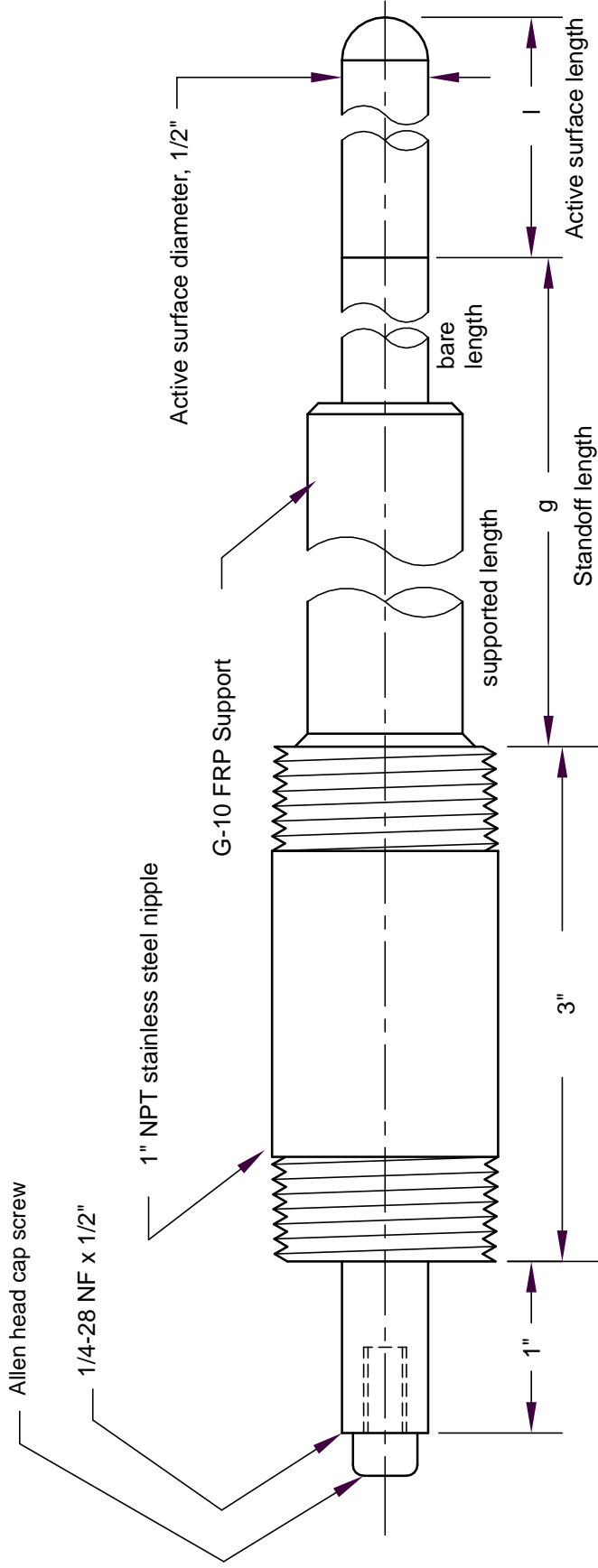
Model AX12 is a variant of Model AR. The rod diameter has been increased to 25mm and a heat shrink sleeve is used for the stand-off.

©EDI, 2002

**edi** electrochemical devices, inc.  
 PO Box 31, Albion, RI 02802 401-333-6112

### Probe Anode w/ 25mm rod

SCALE	HALF	DATE	03/21/02	DRAWN BY	FJA	DRAWING NUMBER	AX12ASY
-------	------	------	----------	----------	-----	----------------	---------



**Model Designation**

Specify as EDI Model AX13-asd-g.l.ttt where  
 a = active surface: M for mixed metal oxide or P for platinum  
 s = substrate: T for titanium or N for niobium  
 d = rod diameter, inches: 5 for .50  
 l = active length, inches: in 1 inch increments (see Note 2)  
 ttt = micro-inches platinum: 100, 150, 200, 250, or 300; or electrolyte for mixed metal oxide: F, B or S for Fresh, Brackish or Salt water

**Notes**

1. A resilient mount is used between anode rod and support to minimize fatigue loading on anode rod.
2. Separately specify supported length and bare length. These two values must equal the standoff length.

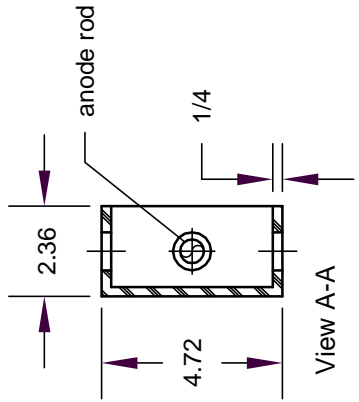
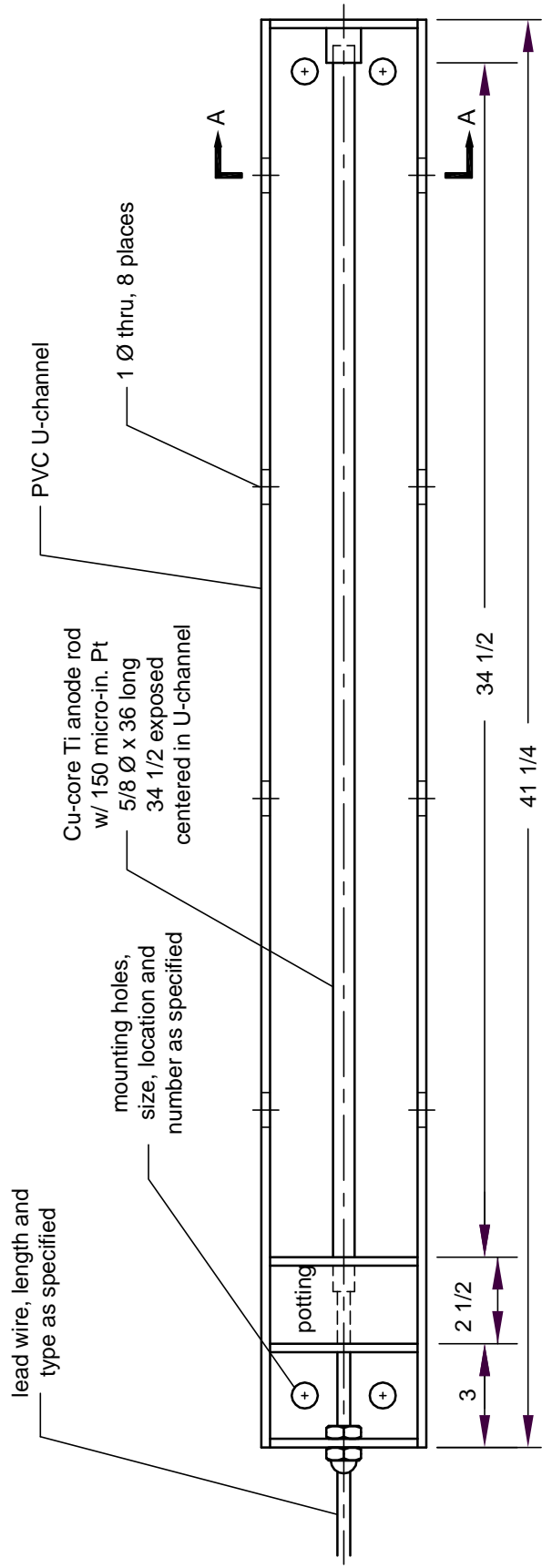
©EDI, 2002

**Caution:** This anode design cannot be used where flow velocity exceeds 1 foot per second.

**edi** electrochemical devices, inc.  
 PO Box 31, Albion, RI 02802 401-333-6112

**Extended Length Probe Anode**

SCALE	FULL	DATE	03/21/02	DRAWN BY	FJA	DRAWING NUMBER	AX13ASY
-------	------	------	----------	----------	-----	----------------	---------



All dimensions shown are in inches

©EDI, 2002



electrochemical devices, inc.  
PO Box 31, Albion, RI 02802 401-333-6112

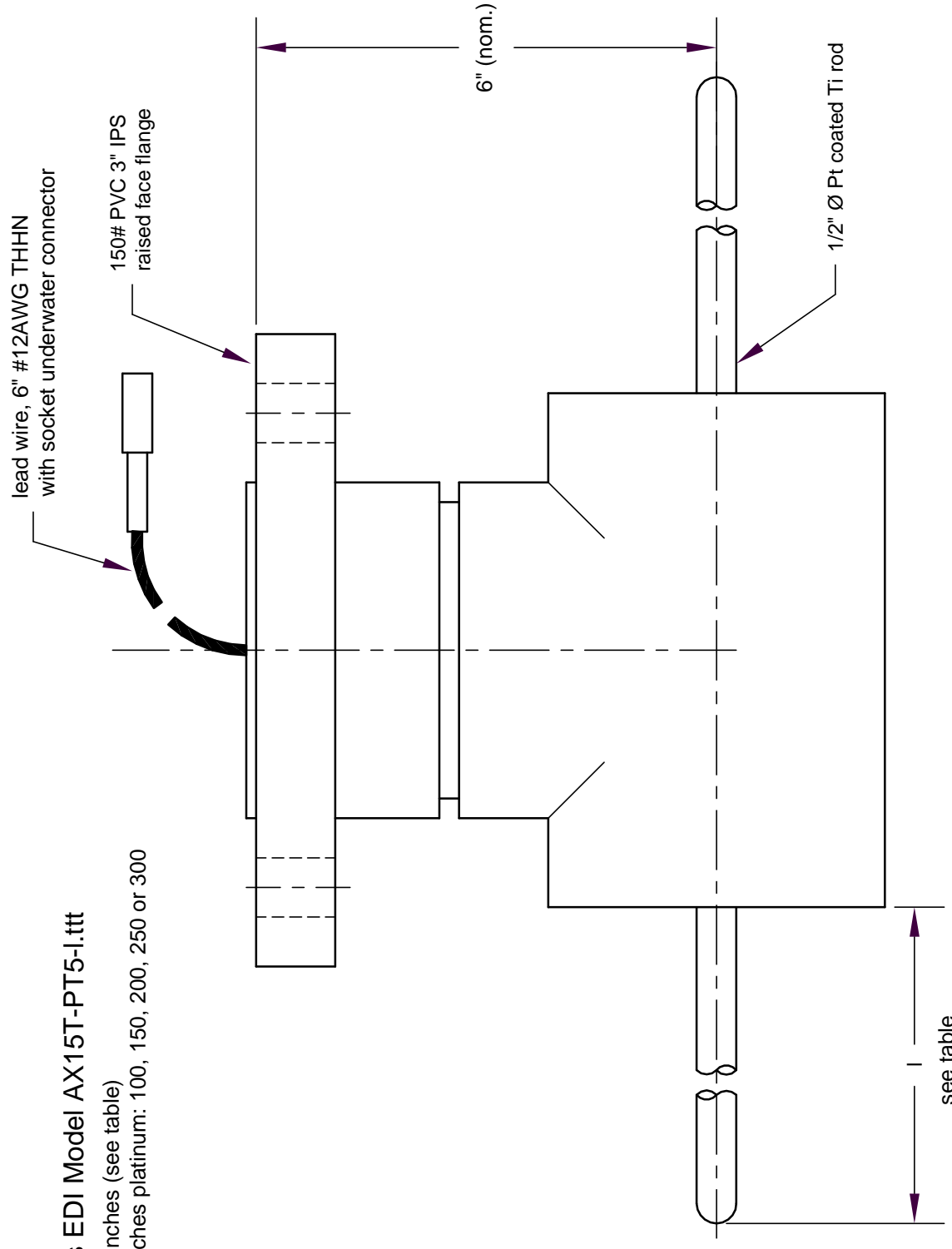
# Surface Mount Rod Anode

SCALE 1/5	DATE 04/03/02	DRAWN BY FJA	DRAWING NUMBER AX14ASY
-----------	---------------	--------------	------------------------

Specify as EDI Model AX15T-PT5-I.ttt

I = length in inches (see table)

ttt = micro-inches platinum: 100, 150, 200, 250 or 300



**Anode rod lengths, I**

inches	mm
11	279
15	381

©EDI, 2002

**edi** electrochemical devices, inc.  
 PO Box 31, Albion, RI 02802 401-333-6112

## Tee-mount Probe Anode

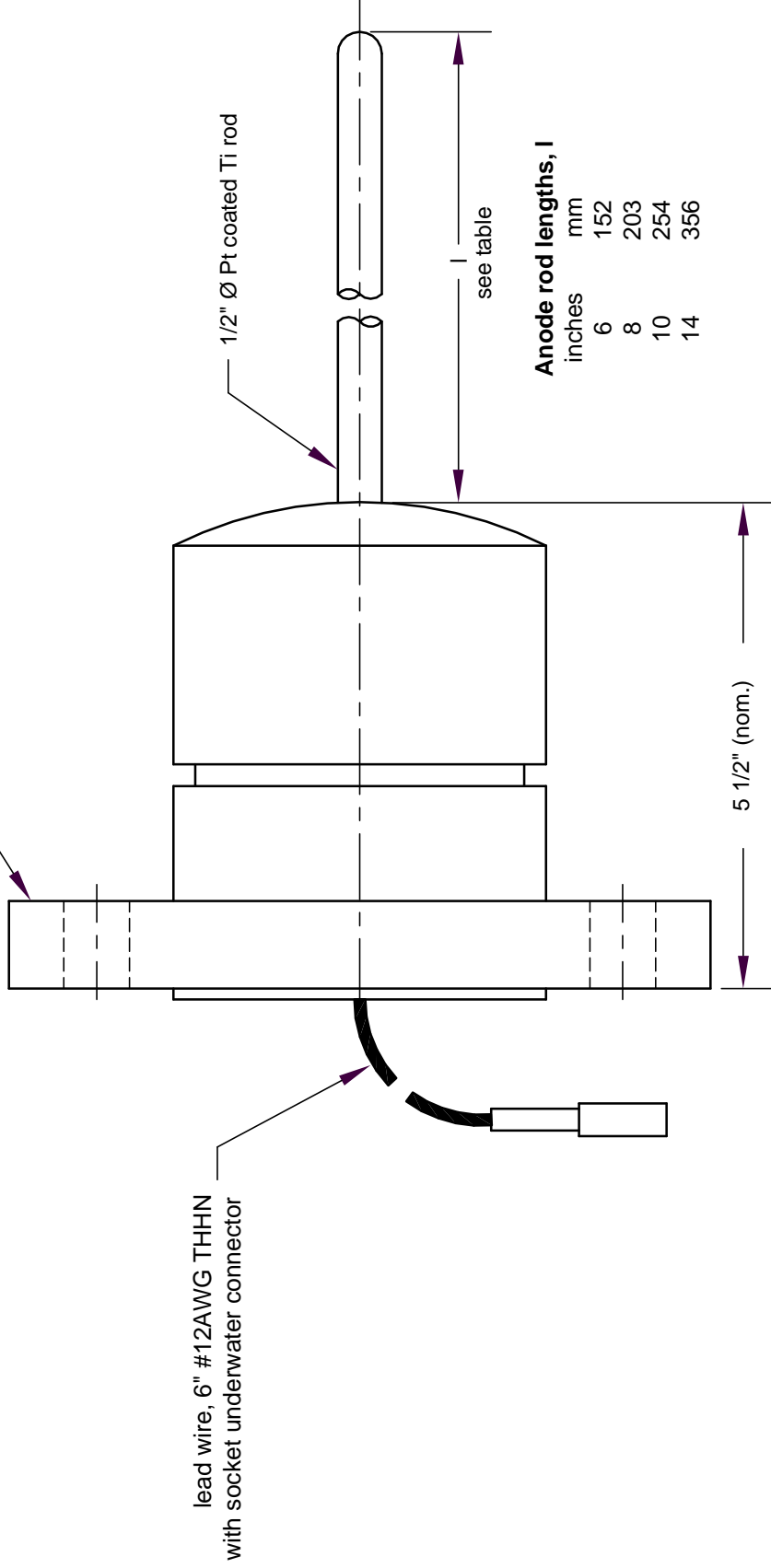
SCALE	HALF	DATE	6/05/02	DRAWN BY	FJA	DRAWING NUMBER	AX15ASY-L
-------	------	------	---------	----------	-----	----------------	-----------

Specify as EDI Model AX15C-PT5-I.ttt

I = length in inches (see table)

ttt = micro-inches platinum: 100, 150, 200, 250 or 300

150# PVC 3" IPS  
raised face flange



**Anode rod lengths, I**

inches	mm
6	152
8	203
10	254
14	356

©EDI, 2002



electrochemical devices, inc.  
PO Box 31, Albion, RI 02802 401-333-6112

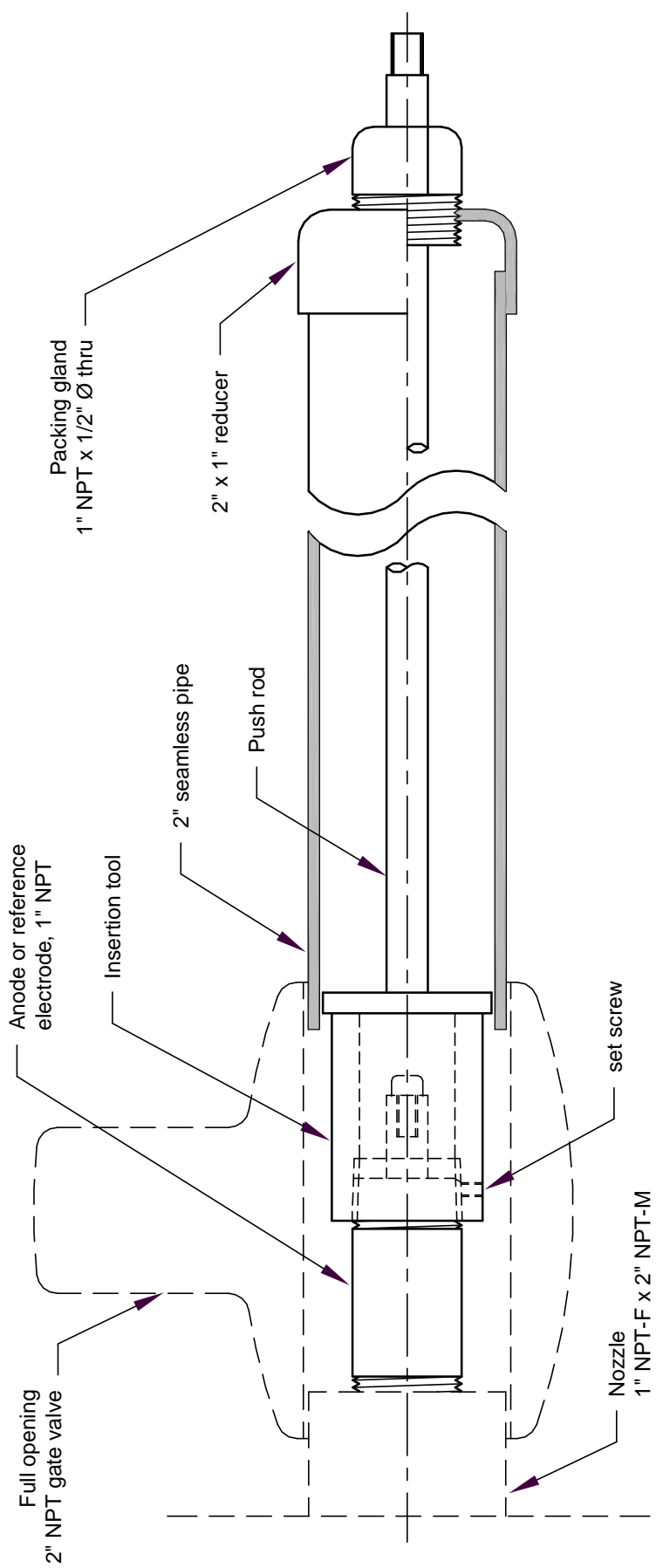
## Cantilever-mount Probe Anode

SCALE HALF

DATE 6/05/02

DRAWN BY FJA

DRAWING NUMBER AX15ASY-R



**Installation**

1. Thread anode or reference electrode nipple into insertion tool until hole in thread aligns with set screw hole in tool. Secure with #8-32 x 3/8 set screw.
2. Retract insertion tool into 2" pipe until reference or anode is completely within pipe. Tighten packing gland against push rod.
3. Thread closed valve onto nozzle. Thread 2" pipe into valve. Open valve.
4. Slightly loosen packing gland and push rod in so nipple on anode or reference contacts the nozzle. Use 3/8" wrench on end of push rod to thread nipple into nozzle.
5. Loosen packing gland and remove 2" pipe from valve. Remove valve from nozzle. Loosen set screw to remove insertion tool from nipple.
6. Finish tightening nipple onto nozzle.

To remove anode or electrode, follow steps in reverse order.

©EDI, 2003



electrochemical devices, inc.  
 PO Box 31, Albion, RI 02802 401-333-6112

## Insertion Fixture Assembly

SCALE HALF

DATE 06/13/03

DRAWN BY FJA

DRAWING NUMBER

AX16ASY